



Craster Road, London, SW2

£369,950

1 bedroom flat for sale

Property Details

A 630 square foot split-level one double bedroom Victorian period conversion flat located within walking distance to Brixton and Herne Hill stations.

Features

- Chain free
- Victorian
- Split-level
- Bright and airy throughout
- Over 630 square feet of internal living space

Council tax band C EPC rating D (66)





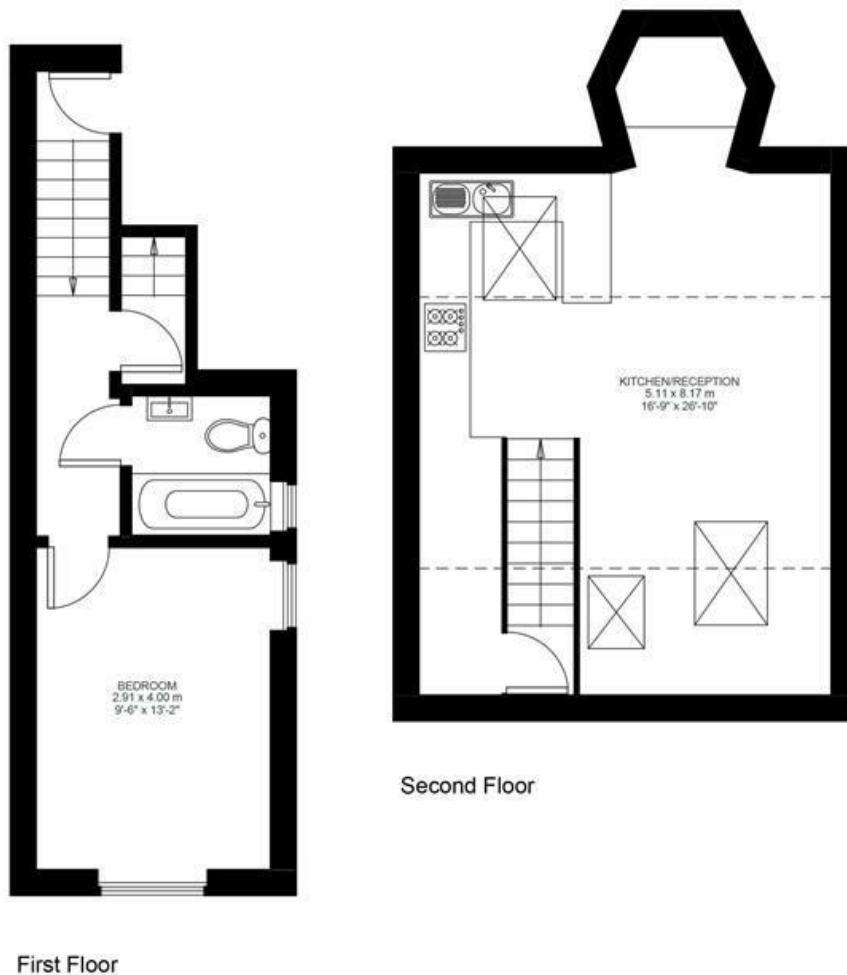
Craster Road

1 Bed flat

Approx internal area:

634 sqft 59 sqm

While we do try our very best, floor plans are produced as a guide only and we take no responsibility for the precise accuracy with which any property is represented



Craster Road, London, SW2

