

**Leander Road, Brixton, SW2****£540,000**

2 bedroom flat - conversion for sale

Property Details

To the front of the flat is the heart of the home, a smart open-plan living area consisting of a cosy lounge area, plenty of space for a large dining table and a sleek, modern and integrated kitchen with an abundance of storage options and surface space. A large bay window floods the large room with natural light, creating a lovely airy atmosphere. Adjacent, one of the two well-proportioned bedrooms, followed by a contemporary bathroom and the further bedroom. Both bedrooms are well-proportioned doubles that are peacefully positioned towards the rear and benefit from a level of privacy from each other, meaning the flat is ideal for sharers or anyone looking to let the second bedroom. As demonstrated by the current owner, the space is flexible and can be repurposed to suit the purchaser's needs.

Features

- Two double bedrooms
- Victorian conversion
- 650 square feet of internal space
- Bright and airy throughout
- Close to Brockwell Park
- Nestled in the Josephine Conservation Area
- Ten-minute walk to Brixton Village and the tube station

Council tax band B EPC rating C (70)

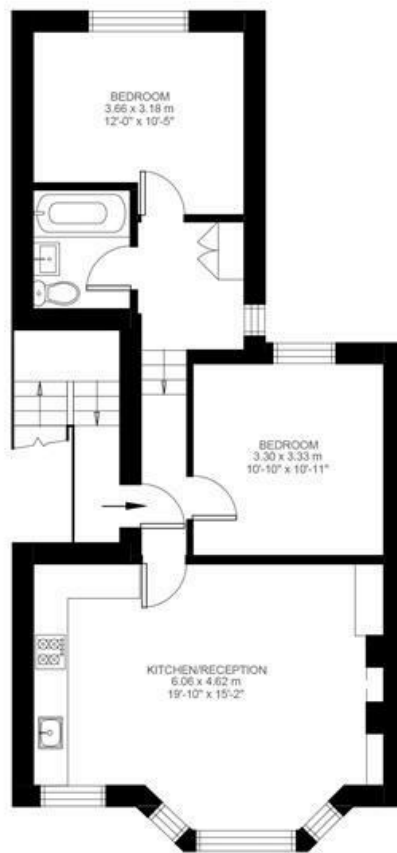


Leander Road, Brixton, SW2

Leander Road, Brixton, SW2

2 Bedroom Flat

Approximate internal area: 650 sqft 60 sqm



First Floor



While we do try our very best, floor plans are produced as a guide only and we take no responsibility for the precise accuracy with which any property is represented.

Leander Road, Brixton, SW2

