

Belvedere Place, Brixton, SW2

£535,000

2 bedroom flat - purpose built for sale

Property Details

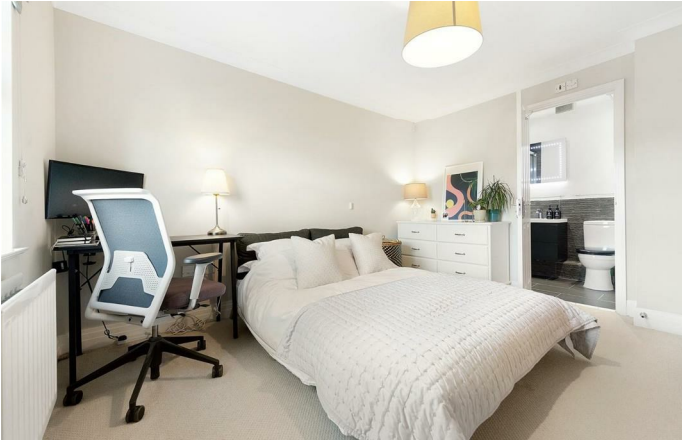
The open-plan living space is particularly appealing, offering a cosy living area and enough space for a large dining table, or indeed anything else the purchaser may desire, the room benefits from a Juliet balcony overlooking the shared gardens that floods the space with fresh air and natural light, adding to the appealing atmosphere within. A contemporary separate kitchen is conveniently adjacent, with plenty of storage options and surface space, making the flat ideal for entertaining guests and hosting dinner parties. The principal bedroom is a particularly peaceful and well-proportioned space, complete with built-in storage and a sleek en-suite bathroom. A second comfortable double room also with built-in storage follows on, this room could easily be rented out or repurposed to suit the needs of the purchaser. A modern family sized bathroom completes the property.

Features

- Two double bedrooms
- Two bathrooms
- Juliet balcony
- Secure, private mews development
- Ample storage
- Large communal gardens
- Off-street allocated parking
- Secure bike storage by arrangement
- Central location, close to the action
- Walking distance to Northern and Victoria lines

Council tax band D EPC rating C (75)

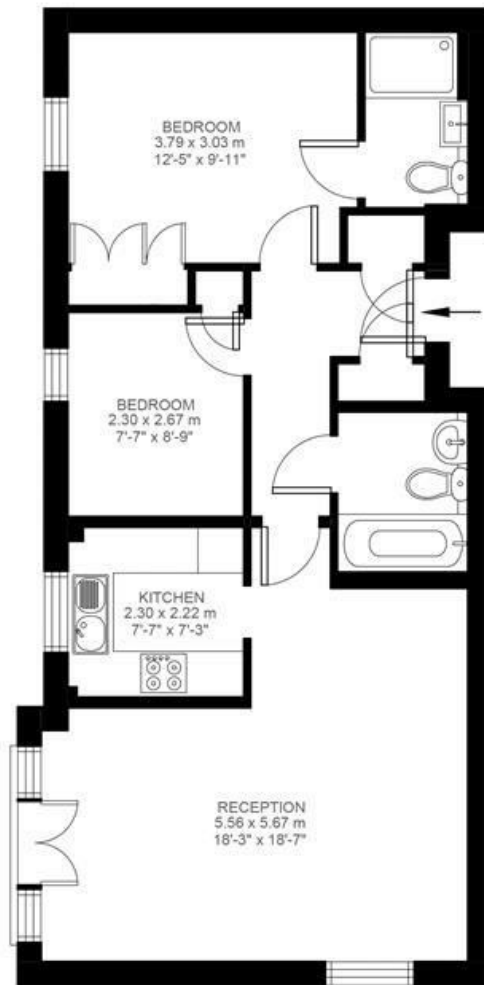




Belvedere Place, Brixton, SW2

2 Bedroom Flat

Approximate internal area: **686 sqft 64 sqm**



Second Floor



While we do try our very best, floor plans are produced as a guide only and we take no responsibility for the precise accuracy with which any property is represented

Belvedere Place, Brixton, SW2

