



Trinity Rise, Brixton, SW2

£450,000

2 bedroom flat - purpose built for sale

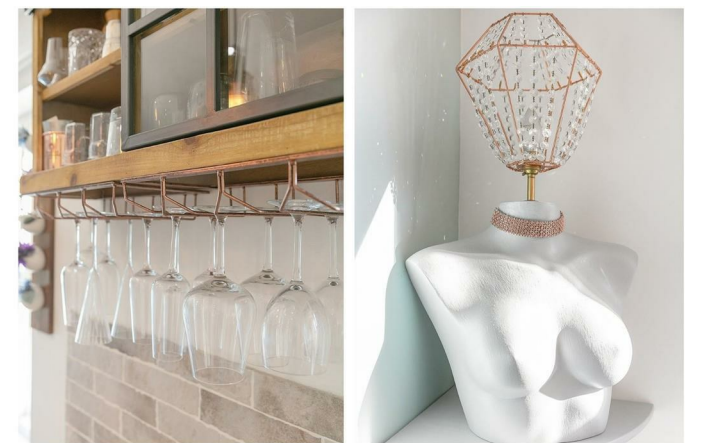
Property Details

A spacious and airy atmosphere occupies the open-plan living space, which is the heart of the home. A sleek and integrated kitchen is arranged over on side of the room, complete with an abundance of storage and a handy breakfast bar. The space is ideal for entertaining or relaxing and unwinding. The lounge area offers further generous dimensions and the property is decorated in neutral, tasteful tones throughout. The well-distributed bedrooms occupy the other half of the flat, making it ideal for sharers or anyone looking to let the spare room. A stylish and modern bathroom completes the property.

Features

- Two double bedrooms
- Secure modern build
- Over 610 square feet of internal space
- Bright and airy throughout
- Private car park
- Moments from Brockwell Park
- Victoria line in 10 minutes
- A short stroll to Herne Hill and Tulse Hill stations

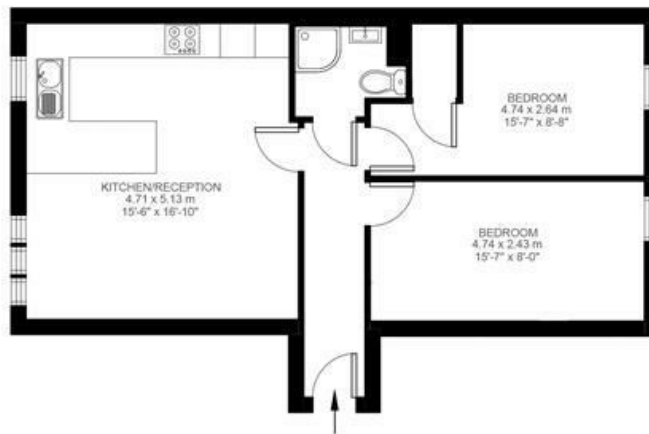
Council tax band EPC rating C (75)



Trinity Rise, Brixton, SW2

2 Bedroom Flat

Approximate internal area: **612 sqft 57 sqm**



Second Floor



While we do try our very best, floor plans are produced as a guide only and we take no responsibility for the precise accuracy with which any property is represented.

Trinity Rise, Brixton, SW2

