**Burgoyne Road, Clapham, SW9**

1 bedroom flat for sale

£425,000

Share of Freehold

Property Details

The flat comprises a comfortable double bedroom, flooded with light through a characterful bay window and offering handy built-in storage. A sleek and modern en-suite bathroom follows on, and the heart of the home is found at the rear of the property, opening out onto the pretty, South-West facing, private and low-maintenance garden at the rear. The open plan room provides a lovely space to relax, unwind, dine and entertain, with a well-appointed, integrated kitchen and sleek floor-to-ceiling glass doors that add to the appealing atmosphere. The square footage on offer has been considerably utilised to maximise the space, and there is a handy basement below, ideal for storing away those items not used on a regular basis. The flat further benefits from an off-street parking space and a share of the freehold.

Council tax band B **EPC rating D (66)**

Features

- One double bedroom
- Victorian conversion
- Bright and airy throughout
- South-West facing private garden
- Off street parking space
- Share of freehold
- Cellar
- Walking distance to Brixton, Clapham and Stockwell High Streets
- Chain-free

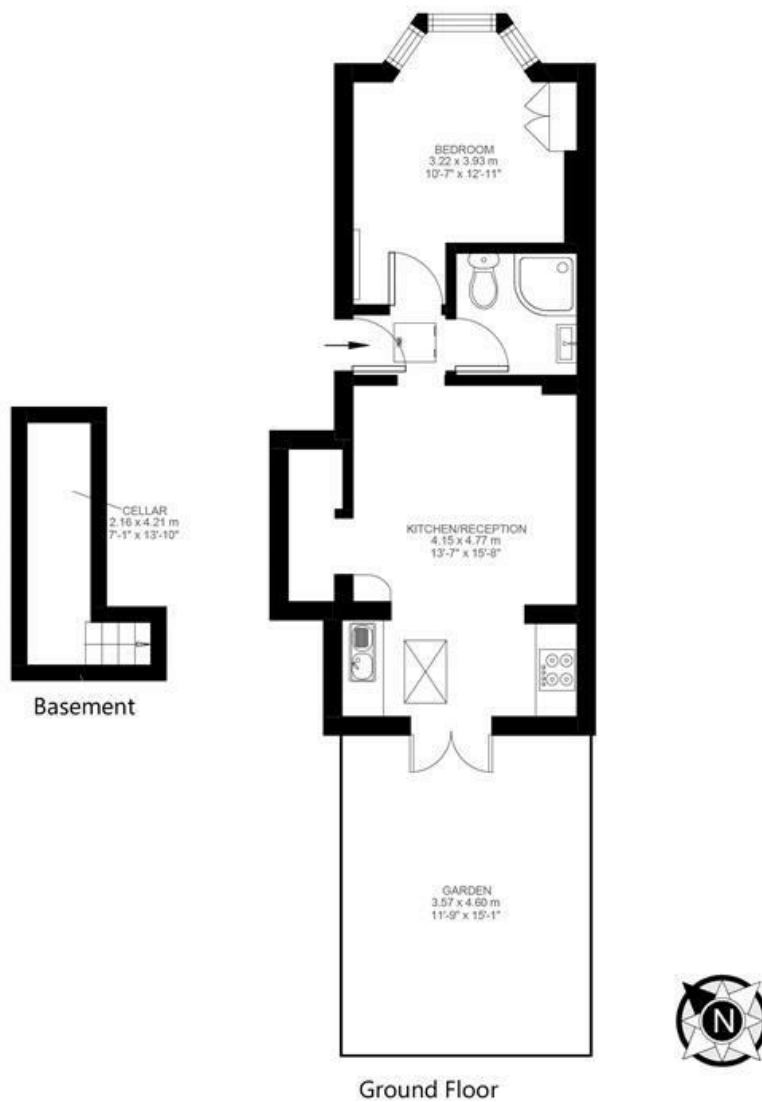


Burgoyne Road, Clapham, SW9

Burgoyne Road, Clapham, SW9

1 Bedroom Flat

Approximate internal area: **431 sqft 40 sqm**



While we do try our very best, floor plans are produced as a guide only and we take no responsibility for the precise accuracy with which any property is represented.

Burgoyne Road, Clapham, SW9

