

Concanon Road, London, SW2

1 bedroom flat for sale

£415,000

Share of Freehold

Property Details

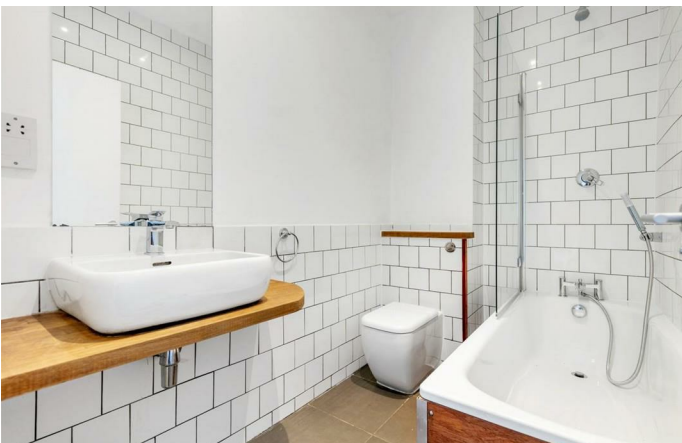
A bright and airy one double bedroom flat in one of the sought after Victorian terraced houses on Concanon Road, located between Brixton (6-minute walk) and Clapham (10-minute walk). The flat consists of an open-plan reception room to the back of the building, a modern bathroom and a double bedroom with great dimensions, high ceilings and a bay window. Unlike a lot of similar conversions, the majority of the total square footage is useable living space, as opposed to being distributed within larger hallways. An ideal opportunity for anyone looking to move into a new property hassle-free.

Council tax band C

EPC rating C (74)

Features

- Chain free
- Victorian
- Recently redecorated
- Bright and airy throughout
- Close to transport links
- Walking distance to the northern and victoria tube lines



Concanon Road, London, SW2



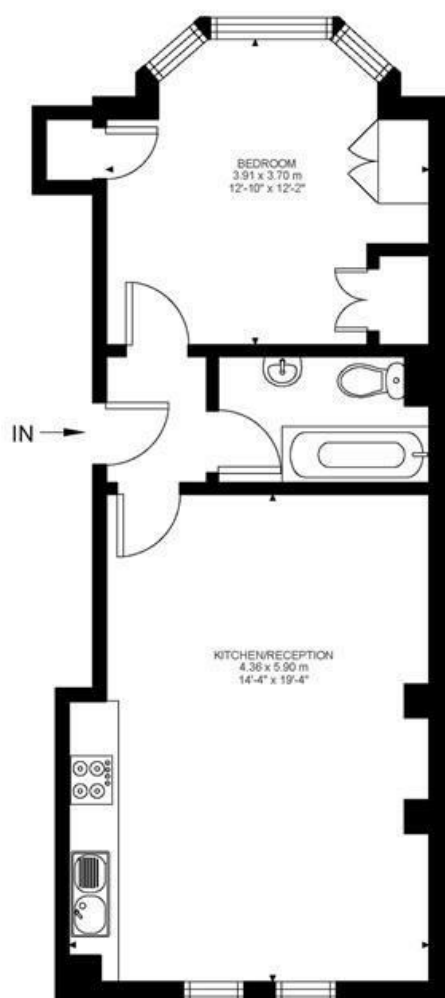
1 Bed flat

Approx internal area:

492 sqft 46 sqm

While we do try our very best, floor plans are produced as a guide only and we take no responsibility for the precise accuracy with which any property is represented

Concanon Road



First Floor



Concanon Road, London, SW2

