



## Leigham Vale, Tulse Hill, SW16

£425,000

2 bedroom flat for sale

### Property Details

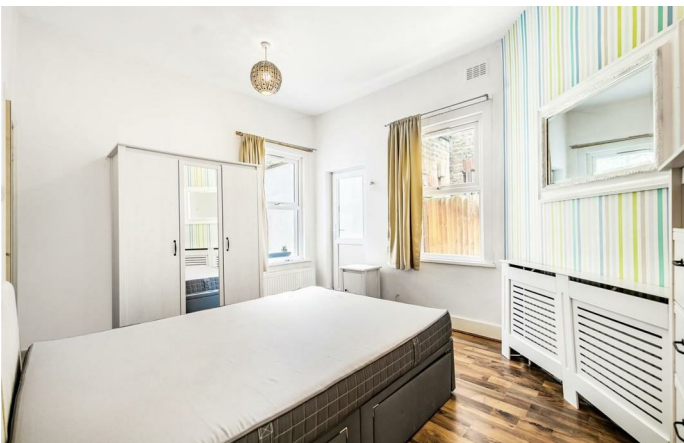
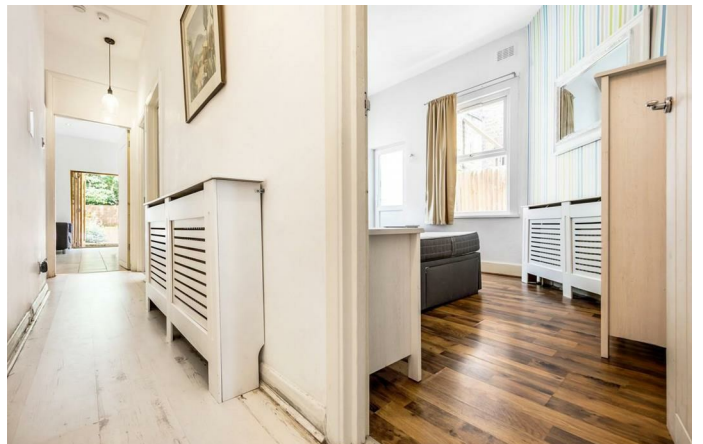
A spacious two double bedroom garden flat with a study in a converted period house, situated between Tulse Hill (6 minutes), Streatham Hill (10 minutes), Brixton and Clapham South. There are two spacious double bedrooms located at the front of the building separated by a third room which is currently set up as a home office. The bathroom is modern and there is an open plan reception room at the back of the building. This comfortable entertaining area has concertina doors which allow the living space to flow seamlessly into the pièce de résistance, a seventy-five foot West facing garden.

Council tax band D

EPC rating D (63)

### Features

- Private garden
- Chain free
- Development potential
- Bright and airy throughout



# K

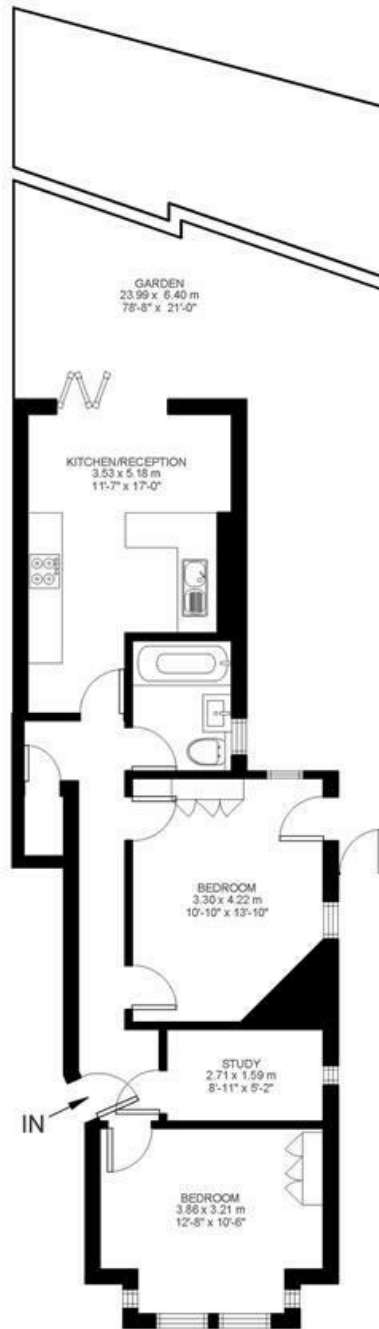
## Leigham Vale

2 Bed flat

Approx internal area:

**655 sqft 61 sqm**

While we do try our very best, floor plans are produced as a guide only and we take no responsibility for the precise accuracy with which any property is represented



Ground Floor



Leigham Vale, Tulse Hill, SW16

