



Holmewood Road, Brixton, SW2

£475,000

1 bedroom flat - conversion for sale

Property Details

The front room, currently occupied as an impressive reception, boasts high and intricately corniced ceilings, a large bay window adorned with recently fitted, wooden bespoke shutters, a working fireplace and restored wooden floorboards. The space has been stylishly finished by the current owners and is flooded with light, creating an attractive atmosphere and making this the ideal room in which to relax and unwind or entertain guests. A comfortable double bedroom follows on, peacefully tucked away from the already quiet road and providing direct access out to the private garden, allowing fresh air to breeze through the space. There is a further feature fireplace on offer, a built-in wardrobe and plenty of room for additional storage. A contemporary family-sized bathroom separates the bedroom from the kitchen, which is arranged at the rear of the home. The ample-sized eat-in kitchen boasts an abundance of storage and surface space, plus a small utility room tucked away discreetly, as well as further access out onto the South-facing, landscaped, 33ft garden.

Council tax band C EPC rating (null)

Features

- One bedroom
- 715 square feet of internal space
- Victorian conversion
- South-facing private garden
- Stunning character throughout
- Bright and airy
- Cellar
- Potential to extend
- Pretty garden square
- Sought-after location

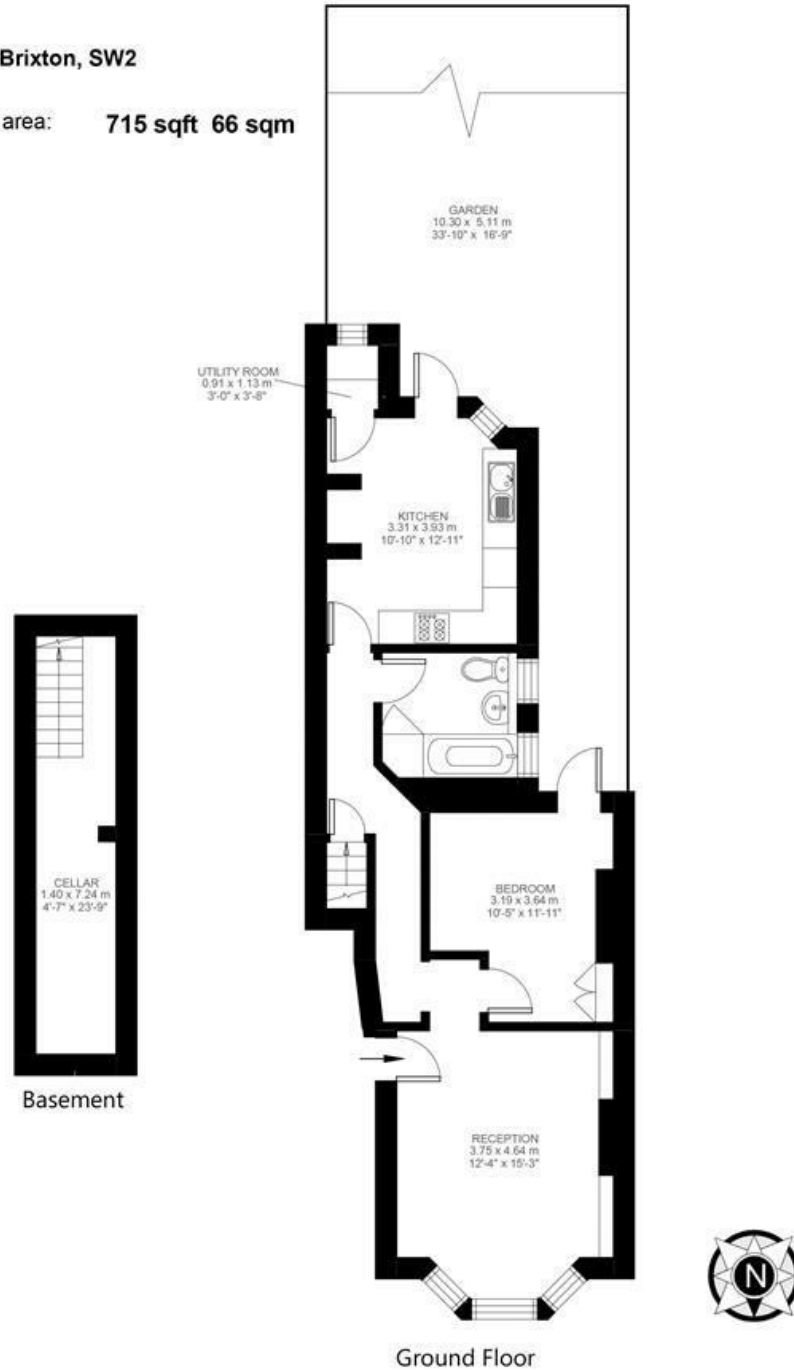


Holmewood Road, Brixton, SW2

Holmewood Road, Brixton, SW2

1 Bedroom Flat

Approximate internal area: **715 sqft 66 sqm**



While we do try our very best, floor plans are produced as a guide only and we take no responsibility for the precise accuracy with which any property is represented.

Holmewood Road, Brixton, SW2

