



Loughborough Road, Brixton, SW9

£500,000

2 bedroom flat - conversion for sale

Property Details

The heart of this characterful home is the open-plan reception, flooded with light through the South-West facing windows, an ideal area to relax watching the sun setting over the neighbouring rooftops into the evening. High ceilings add to the bright and airy atmosphere throughout and the reception is complete with a modern, integrated kitchen and comfortable dimensions to lounge with space for a dining table. The principal bedroom is a fantastic size, larger than average, with multiple double-glazed windows and direct access onto a pretty roof terrace, overlooking the Victorian terraced rows below and out over the London skyline. This particular apartment was selected by the current owners, as it is the only property within the building with an official roof terrace. With access to private outside space being more important than ever, the new purchasers will benefit from a peaceful area to relax and enjoy the warmer months. The smaller second bedroom is nestled adjacent to the principle bedroom and has a multitude of potential uses from a guest bedroom, home office or nursery. The flat is completed by a three-piece contemporary bathroom and is double-glazed throughout.

Council tax band D

EPC rating (null)

Features

- Two bedrooms
- Stunning period conversion
- Private roof terrace
- Beautiful views of the surrounding area
- Bright and airy throughout
- Tasteful, neutral decor
- Sought-after area close to Brixton
- Walking distance to Victoria and Northern lines
- Close to Brixton, Stockwell and Loughborough Junction High Streets

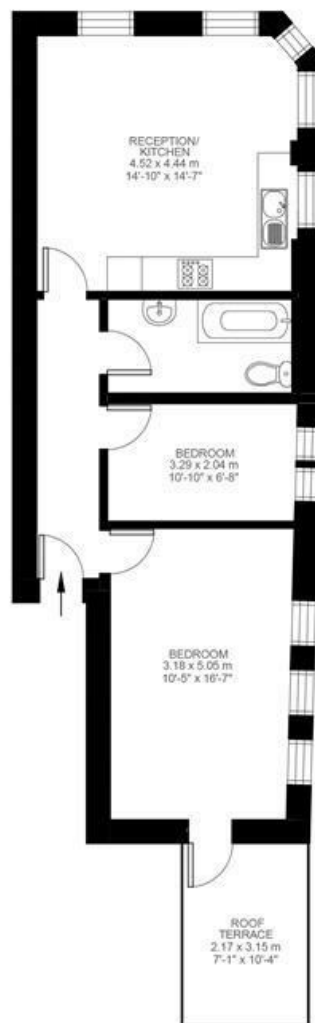


Loughborough Road, Brixton, SW9

Loughborough Road, Brixton, SW9

2 Bedroom Flat

Approximate internal area: 611 sqft 57 sqm



Second Floor



While we do try our very best, floor plans are produced as a guide only and we take no responsibility for the precise accuracy with which any property is represented.

Loughborough Road, Brixton, SW9

