



Norwood Road, Herne Hill, SE24

2 bedroom flat - conversion for sale

£550,000

Share of Freehold

Property Details

The property measures up at over 830 square feet and comprises a stunning reception at the front of the building, brimming with character from the bay window and hardwood floors to the feature fireplace and high ceilings, all adding to the warm and inviting ambience of the property. The kitchen is directly connected, perfect for entertaining, and offers a handy breakfast bar as well as garden access, allowing fresh air to breeze through into the flat. At the rear of the home, two double bedrooms are tucked away peacefully overlooking the mature, east-facing garden. The larger of the two boasts double doors out to the private outside space and the second is complete with built-in storage. Whilst still a functional double bedroom, the smaller room could easily be repurposed to suit the needs of the purchaser. A family-sized contemporary bathroom completes the property, with both a bathtub and walk-in shower.

Council tax band D EPC rating D (65)

Features

- Two double bedrooms
- Over 830 square feet of internal space
- Period conversion
- Mature private garden
- Overlooking Brockwell Park
- Characterful features
- Moments from the heart of Herne Hill
- Share of freehold
- Off-street parking
- Chain-free

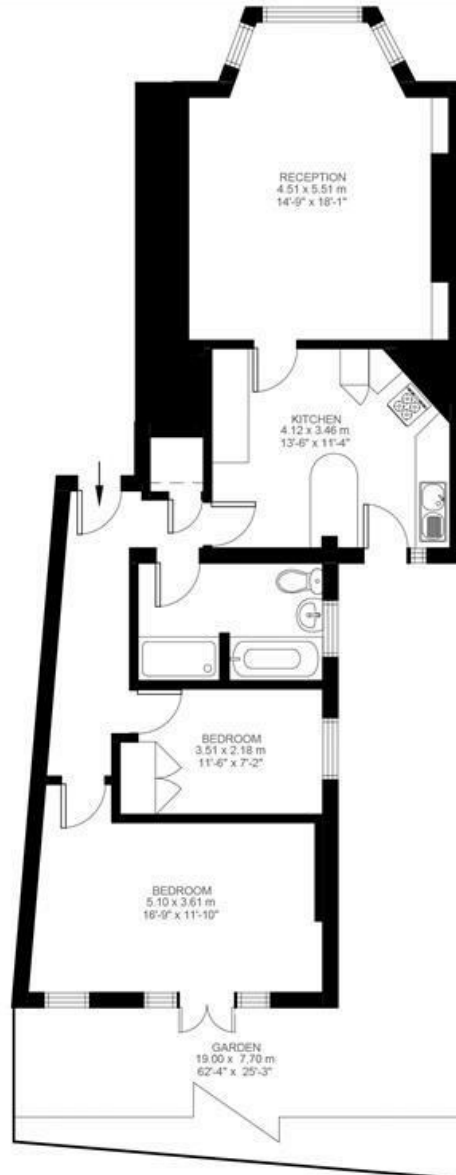


Norwood Road, Herne Hill, SE24

Norwood Road, Herne Hill, SE24

2 Bedroom Flat

Approximate internal area: 831 sqft 77 sqm



Ground Floor



While we do try our very best, floor plans are produced as a guide only and we take no responsibility for the precise accuracy with which any property is represented.

Norwood Road, Herne Hill, SE24

