

Leander Road, Brixton, SW2

£575,000

2 bedroom flat - conversion for sale

Property Details

A fantastic two bedroom garden flat located on a popular residential street, in the heart of the Josephine Avenue conservation area. The property comprises two comfortable double bedrooms with high ceilings that create an airy feel. The second bedroom, unusually, is similar in size and benefits from a set of French doors that allow an abundance of light to flood the room, and provide access into the garden. The bedrooms are separated by a spacious modern bathroom. The open-plan kitchen and living room to the rear of the flat is a lovely space, with ample room to relax and dine. The kitchen is contemporary with plenty of storage and worktop space. French doors provide a seamless transition through to the south-east facing garden, a peaceful suntrap, which feels worlds away from the hustle and bustle of city life. There is over 750 square feet of internal living space, Brockwell Park is located with a five-minute stroll and Brixton tube station is accessible in ten-fifteen minutes walk.

Features

- Two double bedrooms
- Victorian conversion
- Over 750 square feet of internal living space
- Cellar
- Popular quiet residential street
- Short walk to Brockwell Park
- Brixton tube station is a ten-fifteen minute stroll

Council tax band C

EPC rating C (74)

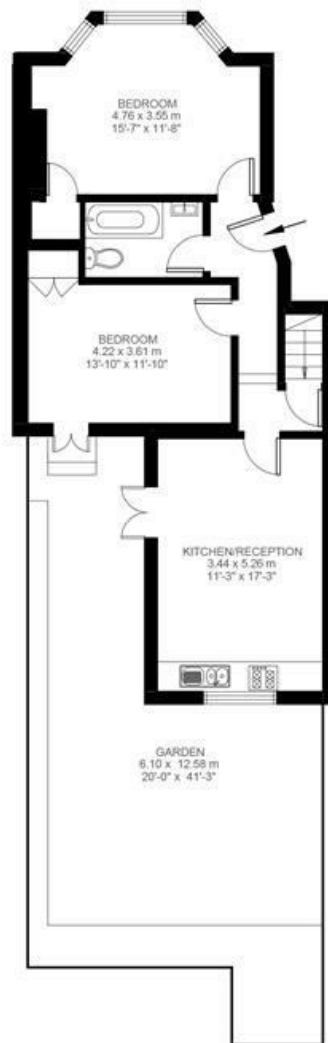


Leander Road, Brixton, SW2

Leander Road, Brixton, SW2

2 Bedroom Flat

Approximate internal area: 775 sqft 72 sqm



Ground Floor



Lower Ground Floor



While we do try our very best, floor plans are produced as a guide only and we take no responsibility for the precise accuracy with which any property is represented.

Leander Road, Brixton, SW2

