



Baytree Road, Brixton, SW2

2 bedroom flat - purpose built for sale

£399,950

Property Details

A bright and airy two double bedroom flat in fantastic condition on the ideally located Baytree Road, minutes from the heart of Brixton and within easy reach of both Clapham and Herne Hill. This lovely property is well-presented throughout with up-to-date neutral décor and tasteful, modern finishes. A well-equipped, modern kitchen opens out onto a large reception, flooded with natural light, creating an ideal entertaining space or somewhere to relax and unwind, with plenty of space to dine comfortably. Both bedrooms are of a decent size, the master being particularly spacious and both benefitting from built-in storage and large windows. The flat is completed by a modern, sleek bathroom. This charming property is ready to move into, where the purchaser can stamp their own mark over time, creating the ideal home.

Council tax band C

EPC rating C (69)

Features

- Two double bedrooms
- Bright and airy throughout
- Almost 700 square feet of well-distributed living space
- Set back from a quiet residential road
- Ideal central location
- Victoria Line, Northern Line and Clapham Overground Station
- Short stroll from Herne Hill & Brockwell Park
- Local amenities in moments
- Chain-free

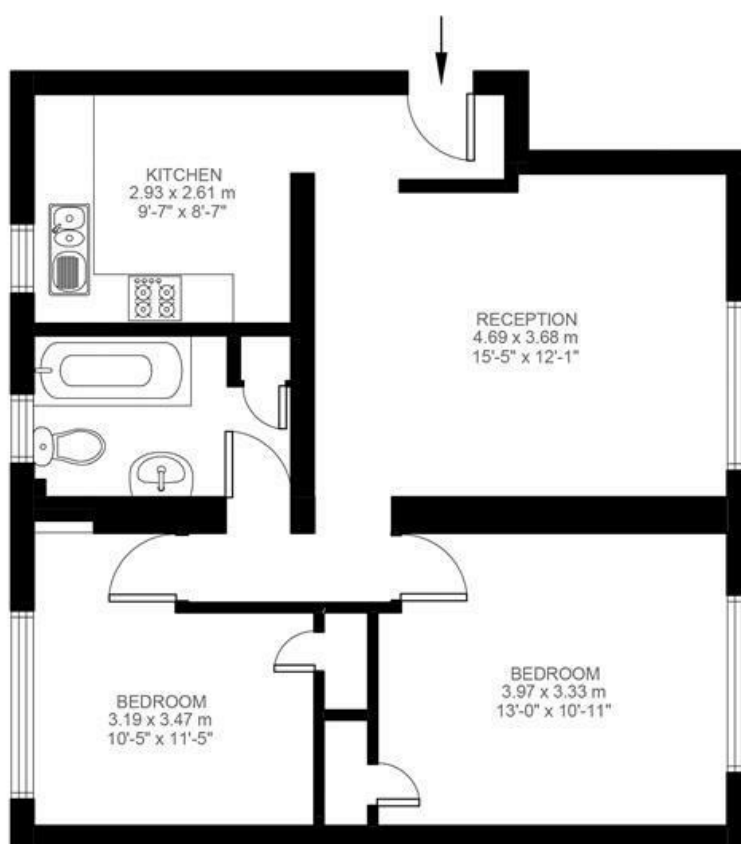


Baytree Road, Brixton, SW2

Baytree Road, Brixton, SW2

2 Bedroom Flat

Approximate internal area: **690 sqft 64 sqm**



Ground Floor



While we do try our very best, floor plans are produced as a guide only and we take no responsibility for the precise accuracy with which any property is represented

Baytree Road, Brixton, SW2

