



Sandmere Road, Clapham, SW4

2 bedroom flat - conversion for sale

£600,000

Share of Freehold

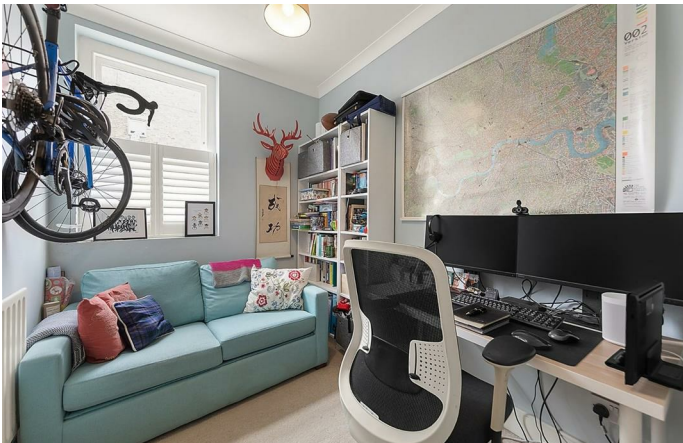
Property Details

This charming flat boasts a tranquil and low maintenance, South-facing private garden with convenient side access, ideal for cherishing the warmer months of the year with all-day sunshine. The outside space, with its mature foliage, is accessed via the recently fitted stylish kitchen, complete with integrated appliances including a wine fridge, attractive shaker-style units and fantastic storage space. The separate reception room sits at the front of the home, flooded with light through a large and characterful bay window, teamed with high ceilings that contribute to the light and airy atmosphere throughout. A feature fireplace and corniced ceilings add to the charming period character of the flat. The larger of the two bedrooms is peacefully positioned overlooking the rear garden, separated from the second bedroom by a beautifully tiled, family-sized bathroom. The second bedroom is still a functional double but can easily be repurposed, as demonstrated by the current owners. Furthermore, this brilliant property also has a utility room on the lower ground floor.

Features

- Two double bedrooms
- Over 740 square feet of internal space
- Private South-facing garden
- Victorian conversion
- Tastefully finished throughout
- Seven-minute walk to Clapham and Brixton High Streets
- Access to the Northern and Victoria tube lines
- Amenities in every direction
- Share of freehold

Council tax band C EPC rating D (65)

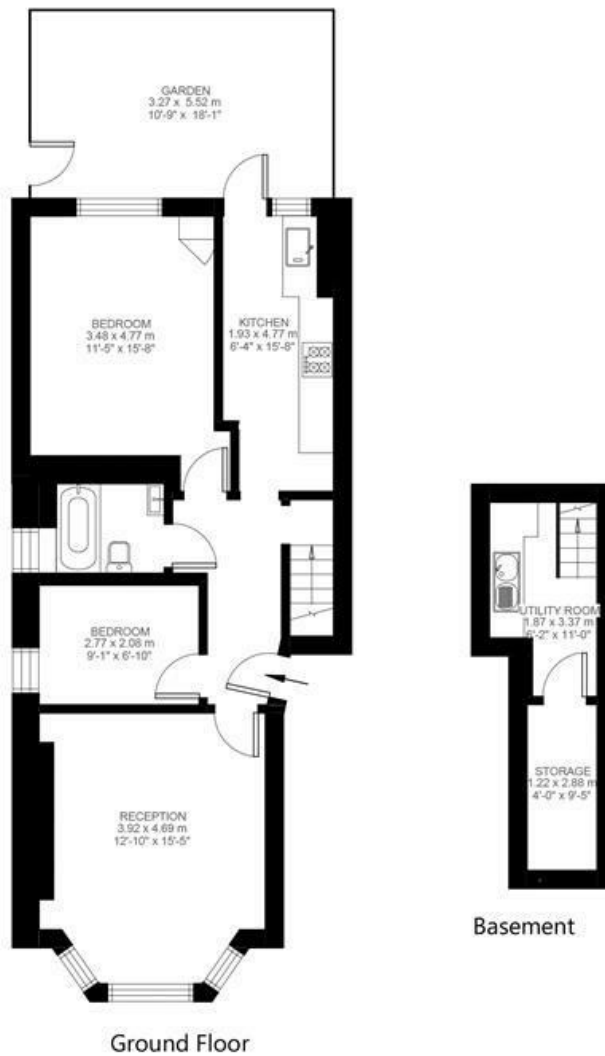


Sandmere Road, Clapham, SW4

Sandmere Road, Clapham, SW4

2 Bedroom Flat

Approximate internal area: 742 sqft 69 sqm



While we do try our very best, floor plans are produced as a guide only and we take no responsibility for the precise accuracy with which any property is represented.

Sandmere Road, Clapham, SW4

