



**Bonham Road, SW2**

2 bedroom flat - conversion for sale

**£520,000**

Share of Freehold

## Property Details

High ceilings and large pane windows allow for a bright and airy atmosphere throughout, boasting views over the pretty blossom tree-lined street below. The flat offers great proportions and comprises a fantastic reception room that feeds through to a contemporary kitchen, subject to the necessary permissions it may be possible to combine these two spaces to create a seamless feel between the two. Two double bedrooms follow on, both generous doubles, one being particularly spacious and benefitting from a characterful bay window and en-suite bathroom. The further bedroom sits adjacent to the second family-sized bathroom.

Council tax band D    EPC rating D (68)

## Features

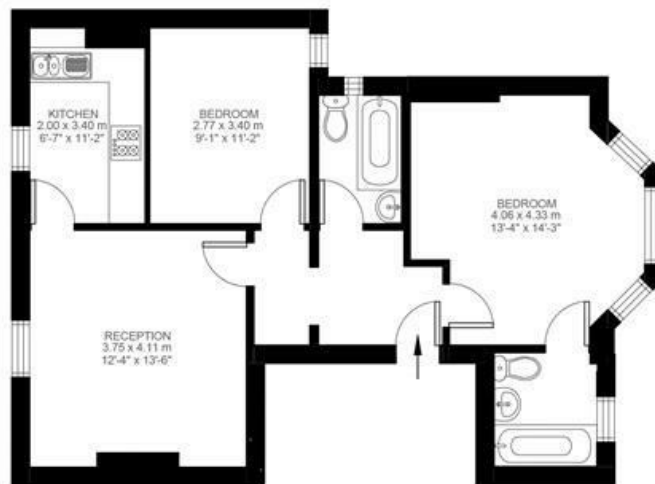
- Two double bedrooms
- Two bathrooms
- Over 670 square feet of internal space
- Victorian conversion
- Bright and airy throughout
- Quiet residential street located between Brixton and Clapham High Streets
- Access to the Victoria and Northern tube lines
- Share of freehold
- Chain-free



**Bonham Road, Brixton, SW2**

**2 Bedroom Flat**

Approximate internal area: **672 sqft 62 sqm**



First Floor



While we do try our very best, floor plans are produced as a guide only and we take no responsibility for the precise accuracy with which any property is represented.

Bonham Road, SW2

