



## Herne Hill, Herne Hill, SE24

1 bedroom flat - conversion for sale

£425,000

Share of Freehold

### Property Details

The square footage on offer has been carefully savoured by a clever layout, maximising on the light and airy feel each room provides and adding to the appealing atmosphere of this charming home. The open plan reception is adorned with character and offers brilliant dimensions to relax and unwind, dine and entertain, feeding through to a well-stocked kitchen, offering integrated appliances and plenty of storage options. On the other side of the flat, a spacious and tranquil bedroom is the perfect place for a peaceful night, also providing plenty of space for storage options. A stylish, tiled bathroom completes this gorgeous property.

### Features

- One bedroom
- Victorian conversion
- Large South-West facing shared garden
- Beautifully finished throughout
- Bright and airy
- Herne Hill and Brockwell Park
- Herne Hill station in three minutes
- Share of freehold

Council tax band B    EPC rating C (69)

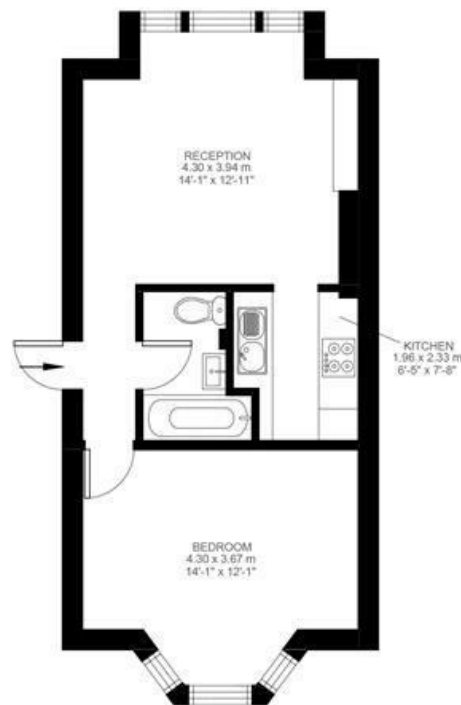


Herne Hill, Herne Hill, SE24

Herne Hill, Herne Hill, SE24

1 Bedroom Flat

Approximate internal area: **441 sqft 41 sqm**



First Floor



While we do try our very best, floor plans are produced as a guide only and we take no responsibility for the precise accuracy with which any property is represented.

Herne Hill, Herne Hill, SE24

