

**New Park Road, Brixton, SW2**

2 bedroom flat for sale

**£499,950**

Leasehold

## Property Details

Boasting amazing views across the London skyline, this beautifully presented apartment feels like a home the moment you walk through the door, with almost 750 square feet of internal living space. The property comprises a large and airy open-plan reception room with glass doors leading to the private terrace. The sleek, fully integrated kitchen is finished to a high standard. Having direct access to private outside space is more important than ever and this property has a terrace with stunning views out over neighbouring rooftops towards Central London. Adjacent are the bedrooms, two spacious double bedrooms similar in size, one with access to the terrace and built-in wardrobes. The second bedroom benefits from storage and a sleek en-suite bathroom. Having two beautifully finished bathrooms is ideal for anyone looking to rent the second bedroom or share with friends. The layout is flexible and the second bedroom could also easily be repurposed as a bright home office or nursery. The flat offers multiple storage options throughout, ideal for hiding away any belongings not used on a daily basis.

Council tax band D

EPC rating B (83)

## Features

- Two double bedrooms
- Two bathrooms
- Private terrace with views out over the London skyline
- Secure modern development within walking distance to Brixton, Clapham and Streatham High Streets
- Almost 750 square feet of internal space
- Bright and airy throughout
- Lift and bike storage
- 7-8 minute walk to Brockwell Park
- Chain-free



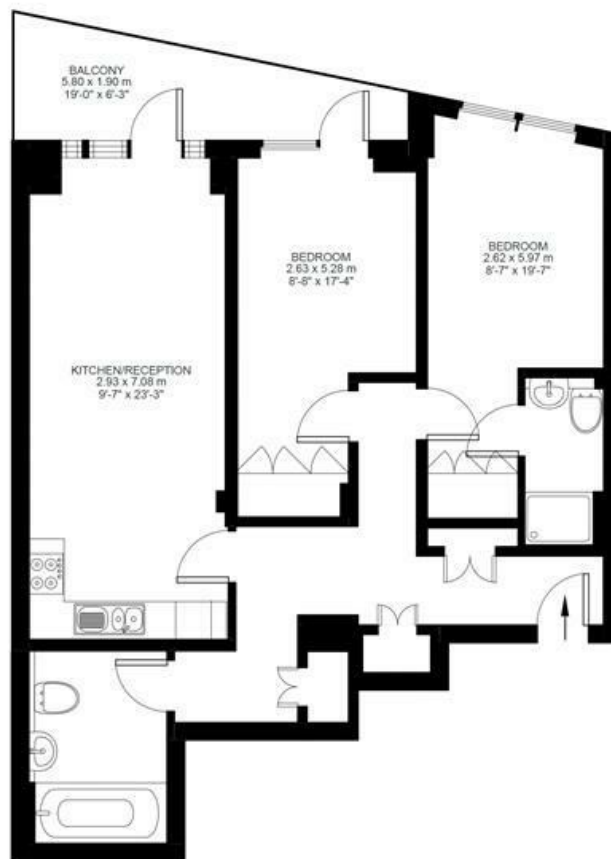


New Park Road, Brixton, SW2

**New Park Road, Brixton, SW2**

**2 Bedroom Flat**

Approximate internal area: **747 sqft 69 sqm**



Third Floor



While we do try our very best, floor plans are produced as a guide only and we take no responsibility for the precise accuracy with which any property is represented.

New Park Road, Brixton, SW2

