



Ashby Mews, Brixton, SW2

£350,000

1 bedroom flat for sale

Property Details

A secure one double bedroom apartment, set within the grounds of a handsome Victorian school conversion on a leafy residential road, located in-between Clapham and Brixton High Streets. This chain-free apartment is nestled on the top floor of a modern build and benefits from manicured gated grounds, CCTV and an allocated off-street parking space. Multiple windows allow natural light to flood the reception room, creating a fantastic entertaining space with plenty of room to dine and socialise comfortably. The kitchen has all you need in terms of mod cons and conveniently feeds off the reception room with double doors that allow the two rooms to be separated, if required. The double bedroom is a fantastic size with ample built-in storage, space for a study area and views over the neighbouring rooftops. Last but not least the bathroom is neutral, just like the rest of the apartment, a fantastic blank canvas ready for move in and stamp their own mark over time. This property is ideal for anyone seeking their own private haven, away from the hustle and bustle but close enough to both Brixton and Clapham to enjoy all the benefits that these in demand areas have to offer.

Council tax band C EPC rating B (82)

Features

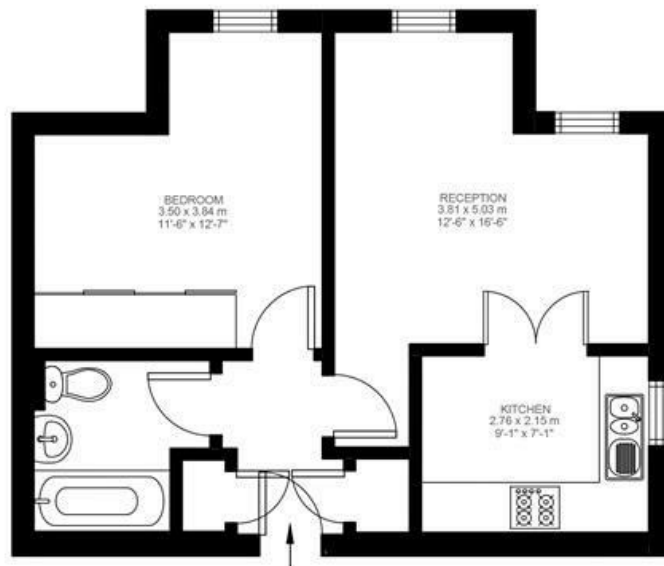
- One double bedroom
- Top floor apartment with views over neighbouring rooftops
- Bright and airy throughout
- 450 square feet of internal living space
- Off-street, gated parking space
- Secure modern build within a school conversion
- Located between Clapham and Brixton
- A short walk to Abbeville Village
- Chain-free



Ashby Mews, Brixton, SW2

1 Bedroom Flat

Approximate internal area: **448 sqft 42 sqm**



Second Floor



While we do try our very best, floor plans are produced as a guide only and we take no responsibility for the precise accuracy with which any property is represented.

Ashby Mews, Brixton, SW2

