



**Thornbury Road, Brixton, SW2**

2 bedroom flat - conversion for sale

**£460,000**

Share of Freehold

## Property Details

This charming property comprises a bright and sociable semi-open plan reception room occupying the front. The room displays endearing period character in the form of corniced ceilings, a bay window and a feature fireplace. The room is great for sharing with friends as the space is sociable and relaxing. The modern and well-equipped kitchen opens onto this entertaining space and can be closed off when required.. The two double bedrooms reside peacefully towards the rear of the building and are complimented by a stylish modern bathroom. The flat is tastefully finished throughout and is ready to move into, where the purchaser can stamp their own mark over time. The flat is of typical layout in these handsome terraced houses and maximizes on space as opposed to wasting square footage in large hallways.

## Features

- Two double bedrooms
- Victorian conversion
- Bright, airy and characterful
- Tastefully finished throughout
- Quiet residential road
- 5 minutes to local amenities
- 15 minutes to Victoria line
- Brockwell Park

Council tax band C    EPC rating (null)

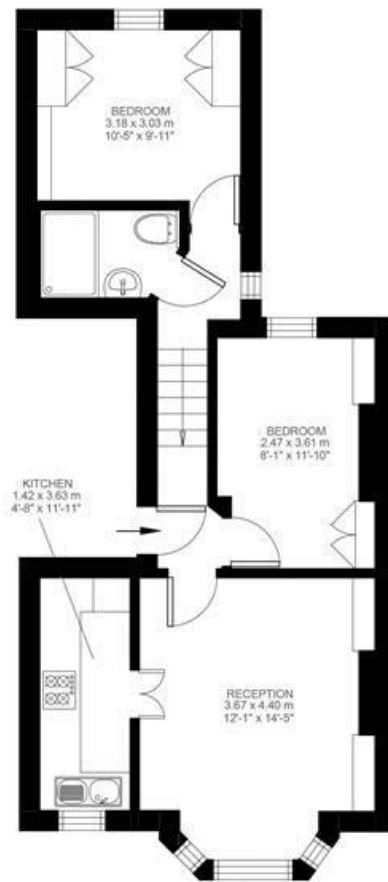


Thornbury Road, Brixton, SW2

Thornbury Road, Brixton, SW2

2 Bedroom Flat

Approximate internal area: **517 sqft 48 sqm**



First Floor



While we do try our very best, floor plans are produced as a guide only and we take no responsibility for the precise accuracy with which any property is represented.

Thornbury Road, Brixton, SW2

