

**Wimbart Road, Brixton, SW2****£550,000**

2 bedroom flat - conversion for sale

## Property Details

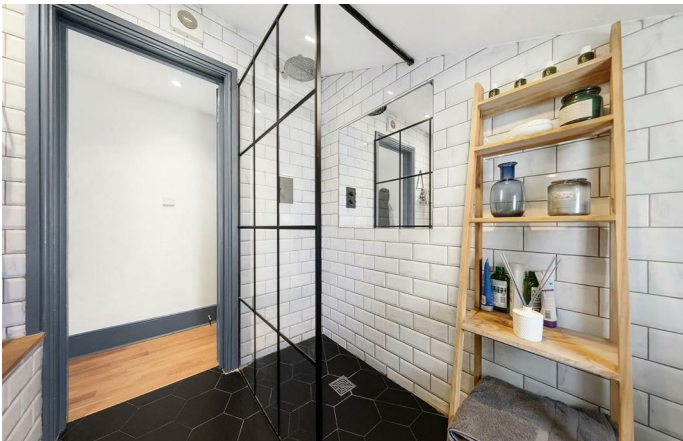
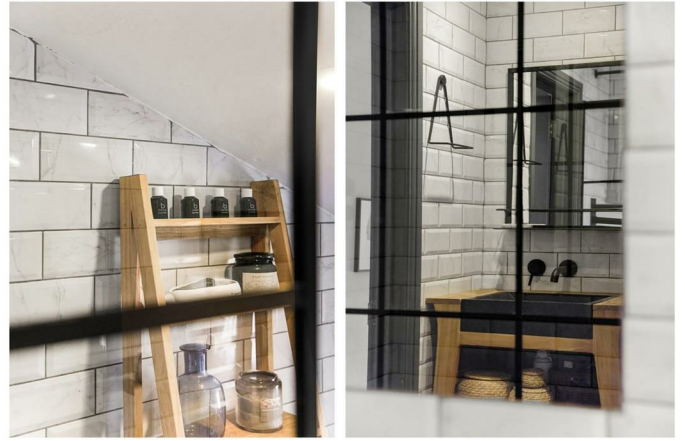
A smart and characterful property, boasting an impressive reception room complete with a large bay window and pretty wooden shutters. This room is perfect to relax and unwind or entertain guests, with a lovely bright and airy atmosphere. Nestled just behind the front room is a stylish contemporary kitchen, offering an abundance of surface space and storage options. Both bedrooms are well proportioned doubles, with an appealing degree of separation and two separate bathrooms, meaning the property is ideal for sharers or anyone looking to let the second room. Both bathrooms are in great condition with stylish features, sleek tiling and high-end finishes in keeping with the rest of the property.

## Features

- Two double bedrooms
- Split-level
- Victorian conversion
- Almost 900 square feet of internal space
- Stylish and tasteful throughout
- Quiet residential street, close to local amenities
- Ten-Fifteen minute walk to Brixton tube station
- Walking distance to Brockwell Park

Council tax band D

EPC rating (null)



Wimbart Road, Brixton, SW2

Wimbart Road, Brixton, SW2

2 Bedroom Flat

Approximate internal area: **892 sqft 83 sqm**



While we do try our very best, floor plans are produced as a guide only and we take no responsibility for the precise accuracy with which any property is represented.

Wimbart Road, Brixton, SW2

