



Gerards Place, Clapham, SW4

2 bedroom maisonette for sale

£675,000

Share of Freehold

Property Details

Arranged over the ground floor, an 'L' shaped open-plan reception provides a sleek integrated kitchen with modern finishes and brilliant storage, comfortable space to dine and a lounge that opens out onto the recently refurbished, decked garden. The space is ideal for entertaining, with floor to ceiling windows that flood the room with sunlight. The garden is spacious and perfect for hosting in the warmer months and dining al-fresco. The floor below offers two peaceful bedrooms, both are well proportioned doubles with access onto a pretty courtyard garden and are served by two modern bathrooms. Further floor-length windows allow the rooms an appealing atmosphere. There is significant storage within the hallway, perfect for keeping the property clutter-free.

Features

- Two double bedrooms
- Two bathrooms and a separate cloakroom
- Two private outside spaces
- Split-level
- Over 800 square feet of internal space
- Bright and airy throughout
- Stylish, modern design
- Fantastic location a short walk from Clapham and Brixton High Streets
- Share of freehold

Council tax band D EPC rating C (76)



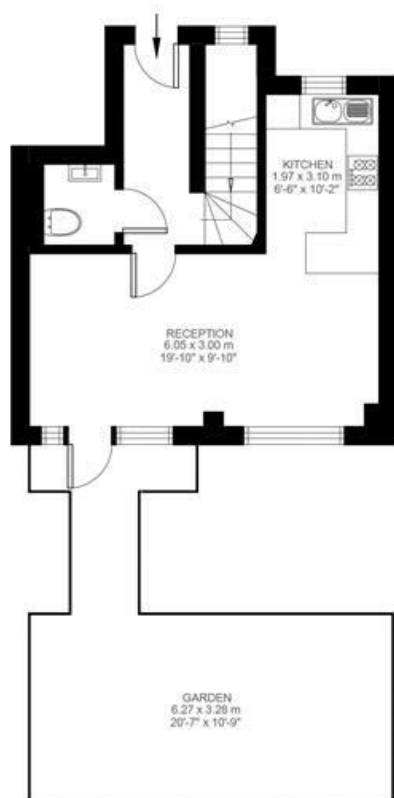


Gerards Place, Clapham, SW4

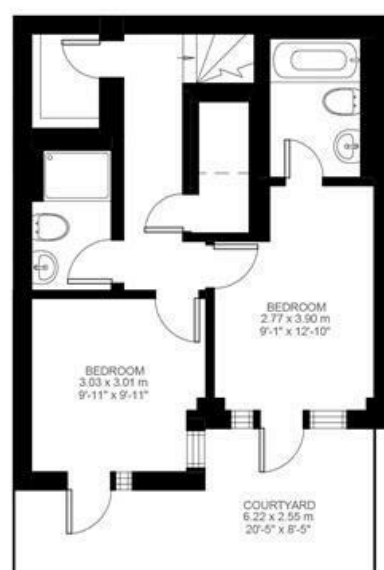
Gerards Place, Clapham, SW4

2 Bedroom Flat

Approximate internal area: **819 sqft 76 sqm**



Ground Floor



Lower Ground Floor



While we do try our very best, floor plans are produced as a guide only and we take no responsibility for the precise accuracy with which any property is represented.

Gerards Place, Clapham, SW4

