



Canterbury Crescent, Brixton, SW9

2 bedroom flat - purpose built for sale

£650,000

Leasehold

Property Details

Larger than average with well-proportioned rooms throughout, this characterful period flat displays an appealing mix of endearing Victorian features and contemporary design. The heart of the home is the semi-open plan reception at the front of the building, a cosy lounge area is flooded with natural light from the large bay window and feeds through to an ample eat-in kitchen diner. The kitchen offers generous storage options and surface space, ideal for entertaining guests and hosting dinner parties. The two comfortable double bedrooms are both peacefully positioned overlooking the private rear garden. The principal is complete with an ensuite bathroom and direct garden access, allowing the outside to breeze into the room and through the flat creating a lovely atmosphere. The second bedroom displays a beautiful feature fireplace and both rooms have built-in storage. High ceilings and large windows contribute to the bright and airy feel throughout the flat, which has been carefully maintained and is decorated in tasteful neutral tones throughout. The property is ready to move into straight away and is being sold chain-free.

Features

- Two double bedrooms
- Two bathrooms
- Victorian mansion block
- 875 square feet of internal space
- Private garden
- Bright, airy and characterful
- Situated in the heart of Brixton
- Moments from the Victoria line
- Chain-free

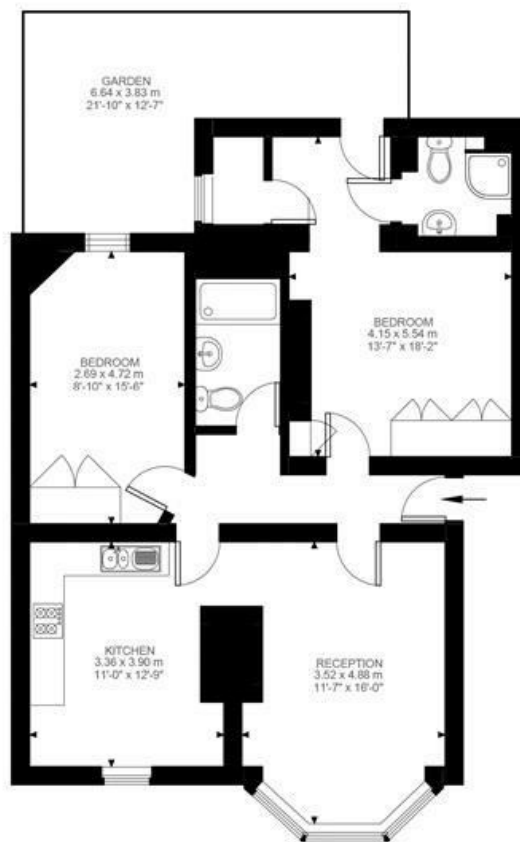
Council tax band C EPC rating (null)



Canterbury Crescent, Brixton, SW9

2 Bedroom Flat

Approximate internal area: 875 sqft 81 sqm



Ground Floor



While we do try our very best, floor plans are produced as a guide only and we take no responsibility for the precise accuracy with which any property is represented.

Canterbury Crescent, Brixton, SW9

