



St Faith's Road, Tulse Hill, SE21

£475,000

2 bedroom flat for sale

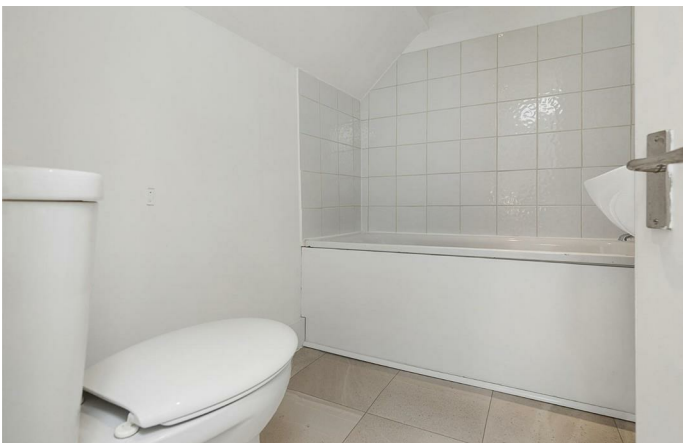
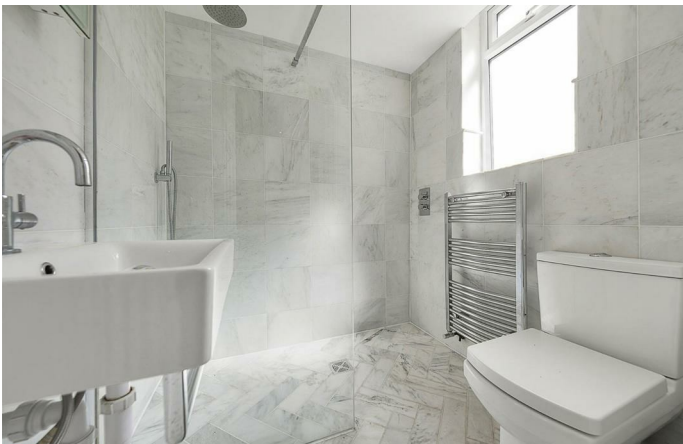
Property Details

The flat boasts 715 square feet of internal space, thoughtfully arranged over the top two floors of this handsome period house. The open-plan reception is a particularly appealing space with a double-height ceiling over the living area and a sleek, integrated, well-equipped kitchen. There is comfortable dimensions to dine and entertain or relax and unwind, with an airy and spacious atmosphere. The rest of the first floor comprises one of the two spacious bedrooms, plenty of space on offer for a work-from-home setup and significant storage plus a tasteful, marble-tiled bathroom. The upper floor consists of a particularly appealing double bedroom, multiple Velux windows flood the room with natural light and fresh air creating a lovely atmosphere and the room benefits from a family-sized en-suite bathroom. The flat has a really secure and tranquil feel throughout, tucked away on the upper floors and feels worlds away from the hustle and bustle of the local area.

Features

- Two double Bedrooms
- Victorian conversion
- Split-level
- 715 square feet of internal space
- Bright and airy
- Tasteful, neutral decor throughout
- Sought after location benefitting from access to Tulse Hill and Herne Hill
- Brockwell Park in easy reach
- Chain-free

Council tax band B EPC rating D (55)



St Faith's Road, Tulse Hill, SE21

St Faith's Road, Tulse Hill, SE21

2 Bedroom Flat

Approximate internal area: 715 sqft 66 sqm



While we do try our very best, floor plans are produced as a guide only and we take no responsibility for the precise accuracy with which any property is represented.

St Faith's Road, Tulse Hill, SE21

