



**Bellefields Road, Brixton, SW9**

**£599,950**

2 bedroom flat - conversion for sale

## Property Details

A stylish split level, two-bedroom apartment in an attractive converted Victorian building. With over 850 square feet of internal living space, the property is entered via your own front door and comprises an eat-in kitchen, a separate reception room, two bedrooms, a modern bathroom and a lovely private roof terrace. The staircases meandering up through the property, a comfortable square footage and your own front door make this contemporary maisonette feel like a home. Brixton is within a two-minute walk, Clapham is a ten to twelve-minute walk and Stockwell is a ten-minute walk.

Council tax band D

EPC rating D (66)

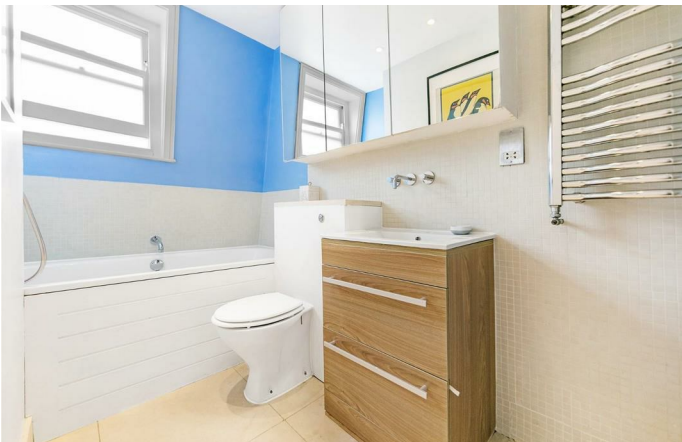
## Features

- Two double bedrooms
- Victorian conversion
- Roof terrace
- Stylish split-level flat
- Bright and airy throughout
- Sought-after location
- Close to transport links
- Walking distance to the Victoria and Northern tube lines









Bellefields Road, Brixton, SW9

**K**

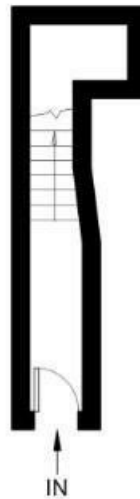
2 Bed flat

Approx internal area:

**855 sqft 79 sqm**

While we do try our very best, floor plans are produced as a guide only and we take no responsibility for the precise accuracy with which any property is represented

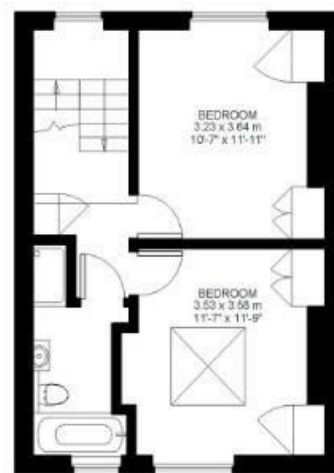
Bellefields Road



Ground Floor



First Floor



Second Floor





Bellefields Road, Brixton, SW9

