



Elm Park, Brixton, SW2

4 bedroom house for sale

£1,050,000

Freehold

Property Details

The ground floor comprises of a wonderfully bright and airy reception room and a spacious kitchen-diner. The kitchen is the perfect family hub, with sleek white units and fully integrated appliances. There is plenty of space for a large dining table as well as the sociable breakfast bar. Glass doors open up to the private rear garden, allowing a seamless transition from the inside to out, ideal for savouring the British summertime within this low-maintenance sun trap. Conveniently, a shed for storage is found at the end of the garden. Arranged over the upper floors, three generous double bedrooms and a fourth bedroom that would be perfect as a nursery, home office or dressing room. Both bedrooms on the first floor offer ample storage options and share an attractive family size bathroom with a separate walk-in shower and bath tub. Spanning the entire second floor, an impressive principal bedroom is beautifully lit with a Juliet-balcony and multiple Velux windows. Offering significant storage and further eaves storage and is completed by a sleek, modern en-suite bathroom.

Features

- Four bedrooms
- Two bathrooms and a WC
- Period family home
- Immaculate throughout
- Almost 1,500 square feet of internal space
- Low-maintenance private garden
- Moments from Brockwell Park
- Brixton & Heme Hill town centres in under fifteen minutes
- Chain-free

Council tax band EPC rating D (64)





Elm Park, Brixton, SW2

Elm Park, Brixton, SW2

4 Bedroom House

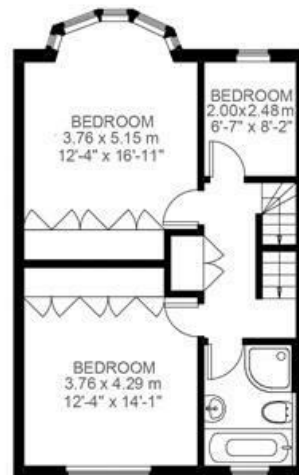
Approximate internal area: **1465 sqft 136 sqm**

Approximate eaves storage: **208 sqft 19 sqm**

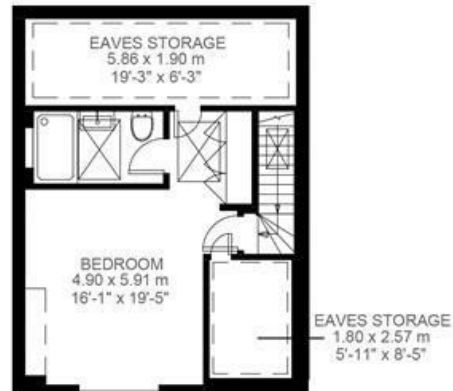
Approximate total internal area: **155 sqm 1672 sqft**



Ground Floor



First Floor



Second Floor



While we do try our very best, floor plans are produced as a guide only and we take no responsibility for the precise accuracy with which any property is represented.

Elm Park, Brixton, SW2

