



Courland Grove, Clapham, SW8

1 bedroom flat - purpose built for sale

£425,000

Leasehold

Property Details

Level with the trees, views of greenery and nature surround this stunning property through multiple large-pane triple glazed windows, flooding the airy open spaces with natural light whilst contributing to the excellent energy efficiency of the flat. With underfloor heating throughout, the open-plan reception is a particularly attractive room, offering generous dimensions, beautifully arranged with a sleek, modern and fully integrated kitchen. The room also offers ample dining space as well as a comfortable and cosy lounge area, ideal to entertain or relax and unwind within a peaceful and private space. Adjacent, the bedroom is equally spacious, with a cosy feel and a large fitted wardrobe. Dual-aspect windows allow all-day sunlight to stream into the room, creating an appealing ambience and perfect for any house-plant fanatics. The property is tastefully finished throughout with clean, neutral décor and a contemporary, family-sized bathroom completes the flat.

Features

- One double bedroom
- Over 570 square feet of internal space
- Beautifully bright and airy
- Designed with modern living in mind
- Fantastic storage
- Overlooking Larkhall Park
- Incredible location with amenities in every direction
- Access to Victoria and Northern Lines
- Clapham High Street and Wandsworth Road Overground
- Chain-free

Council tax band EPC rating B (84)



Courland Grove, Clapham, SW8

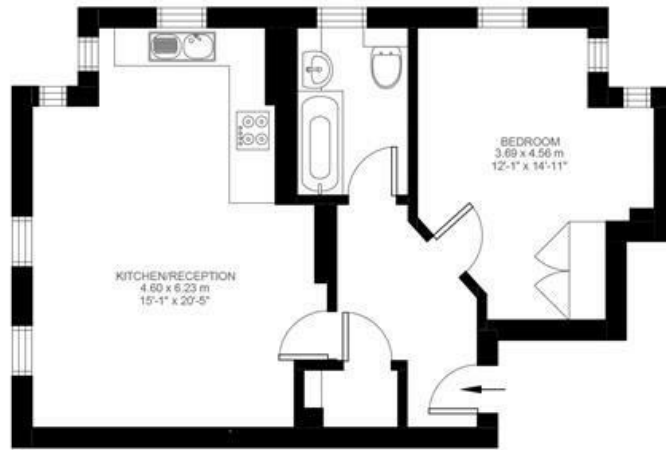
Courland Grove, Clapham, SW8

1 Bedroom Flat

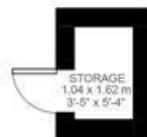
Approximate internal area: **574 sqft 53 sqm**

Approximate storage: **18 sqft 2 sqm**

Approximate total internal area: **55 sqm 594 sqft**



First Floor



While we do try our very best, floor plans are produced as a guide only and we take no responsibility for the precise accuracy with which any property is represented.

Courland Grove, Clapham, SW8

