

**Brixton Water Lane, London, SW2**

**£599,950**

2 bedroom flat - penthouse for sale

## Property Details

A fantastic two double bedroom, two bathroom flat with two balconies in a luxury modern development a stone's throw from Brockwell Park. The property comprises an open plan living space with ample space to relax and dine, two balconies and two bathrooms. This secure gated development has well-maintained communal areas and access to a stunning communal roof terrace with 360 degree views across the neighbouring roof tops and into the distance. This flat is perfect for anyone who wants to be close to the action, situated a short eight minute walk to the heart of Brixton.

## Features

- Chain free
- Balcony
- Roof terrace
- Bright and airy throughout
- Close to Brockwell Park
- Secure modern development

Council tax band      EPC rating (null)





## Brixton Water Lane

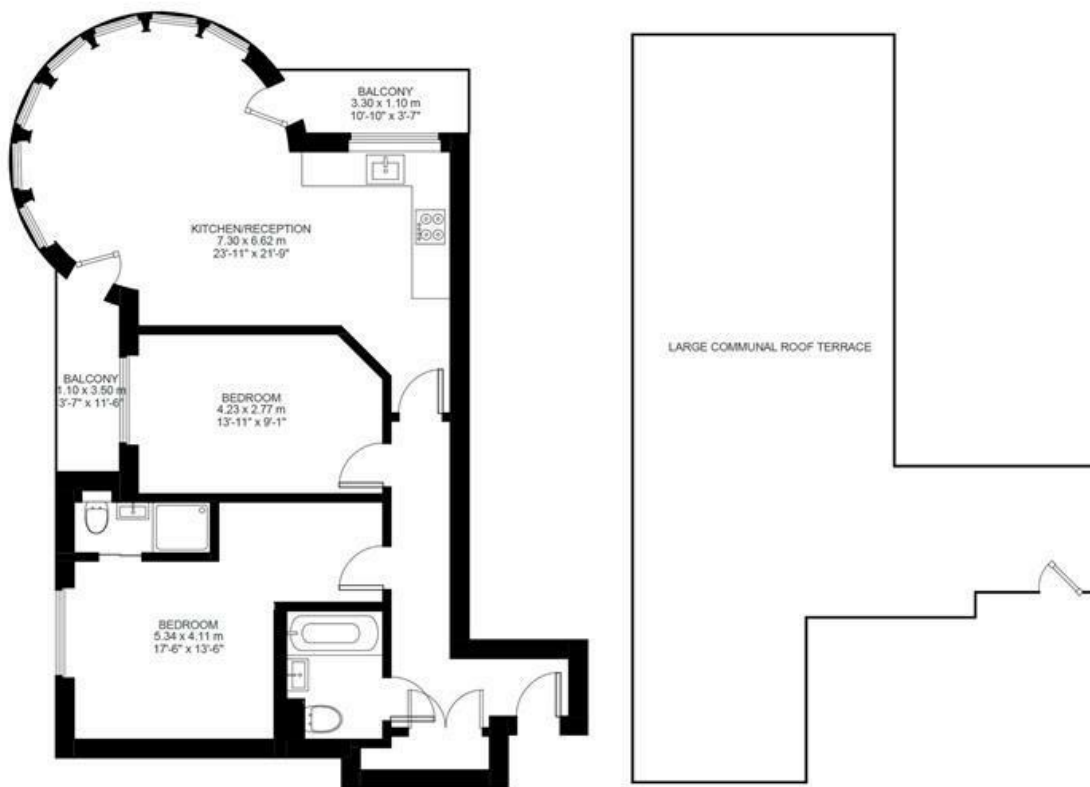
# K

2 Bed flat

Approx internal area:

**813 sqft 75 sqm**

While we do try our very best, floor plans are produced as a guide only and we take no responsibility for the precise accuracy with which any property is represented



Third Floor





Brixton Water Lane, London, SW2

