



## Kendoa Road, Clapham, SW4

2 bedroom flat - conversion for sale

£550,000

Leasehold

### Property Details

Boasting over 700 square feet of internal space that has been considerably utilised, the property comprises an appealing and bright reception, a separate contemporary kitchen with plenty of storage, two bedrooms and two bathrooms. The principal bedroom is particularly appealing, with double sash windows, high corniced ceilings and a stunning en-suite bathroom with a separate, free-standing roll-top bathtub and walk-in shower. The second bedroom could be rented out but would also be ideal as a nursery, home-office or anything else the purchaser may require. The property is completed by a further modern bathroom. This fantastic flat is in great condition throughout and is decorated in neutral tones with tasteful finishes, a blank canvas ready for the purchaser to stamp their own mark.

Council tax band D    EPC rating D (62)

### Features

- Two bedrooms
- Two bathrooms
- Over 700 square feet
- Victorian conversion
- Bright and airy
- Characterful with high ceilings
- Excellent location 2 minute stroll to Clapham High Street
- Quiet residential road
- Northern & Victoria lines
- Chain-free

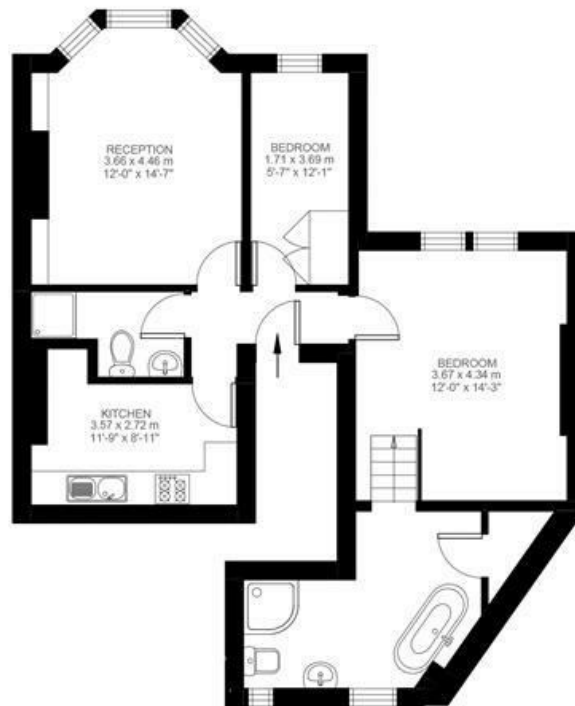


Kendoa Road, Clapham, SW4

**Kendoa Road, Clapham, SW4**

**2 Bedroom Flat**

Approximate internal area: **709 sqft 66 sqm**



First Floor



While we do try our very best, floor plans are produced as a guide only and we take no responsibility for the precise accuracy with which any property is represented.

Kendoa Road, Clapham, SW4

