



## Plato Road, Brixton, SW2

2 bedroom flat - conversion for sale

**£600,000**

Share of Freehold

### Property Details

A split level, two double bedroom Victorian conversion flat with nearly eighty square metres of internal living space. The property comprises a separate reception room, a kitchen diner, two comfortable double bedrooms and a modern bathroom. Plato Road is a residential, terraced street popular for its close proximity to both Brixton and Clapham. Perfectly located an equal distance from the two locations, potential purchasers will benefit from the amenities in both areas and all that Clapham, Abbeville Village, and Brixton Village have to offer in terms of food and festivities.

Council tax band D

EPC rating D (58)

### Features

- Victorian conversion
- Split-level
- Characterful features
- Bright and airy throughout
- Ample storage with access to the loft
- Walking distance to the northern and victoria tube lines
- Share of freehold





Plato Road, Brixton, SW2



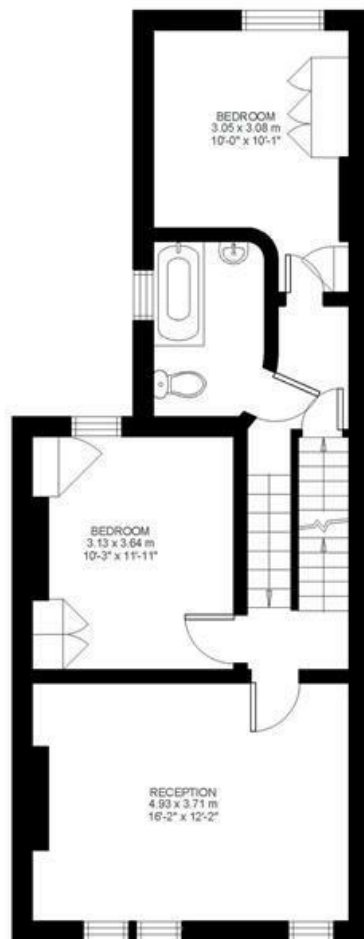
## 2 Bed flat

Approx internal area:

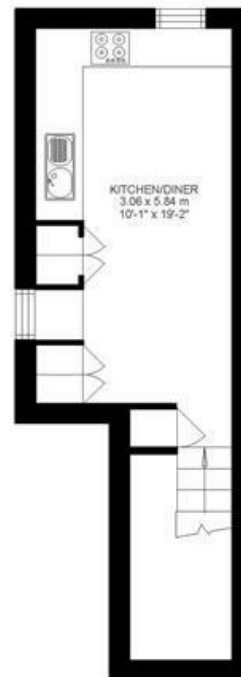
**824 sqft 77 sqm**

While we do try our very best, floor plans are produced as a guide only and we take no responsibility for the precise accuracy with which any property is represented

## Plato Road



First Floor



Second Floor



Plato Road, Brixton, SW2

