



**Kendoa Road, Clapham, SW4**

2 bedroom flat - conversion for sale

**£620,000**

Share of Freehold

## Property Details

Charming and well-proportioned, this attractive property offers a sympathetic layout, maximising the square footage on offer as opposed to wasting space on unused hallways. Multiple rooms allow for flexibility to the needs of the purchaser and the layout could be altered. Currently, the bright and characterful front room is occupied as a reception. The large bay window is teamed with high ceilings, creating a beautifully airy atmosphere in this ideal entertaining space. Adjacent, one of the two comfortable double bedrooms is complete with French doors onto the side return, allowing a seamless transition to the outside. The second bedroom is also a well-distributed double with garden access and the two rooms benefit from a degree of separation, providing the perfect opportunity to share with friends or let the spare room. An attractive and recently fitted integrated kitchen serves the property. Abundant storage options are on offer alongside plenty of surface space, perfect for any keen home chefs. The property is recently decorated throughout in neutral tones with tasteful finishes, ready to move into immediately. A contemporary family sized bathroom completes the property.

## Features

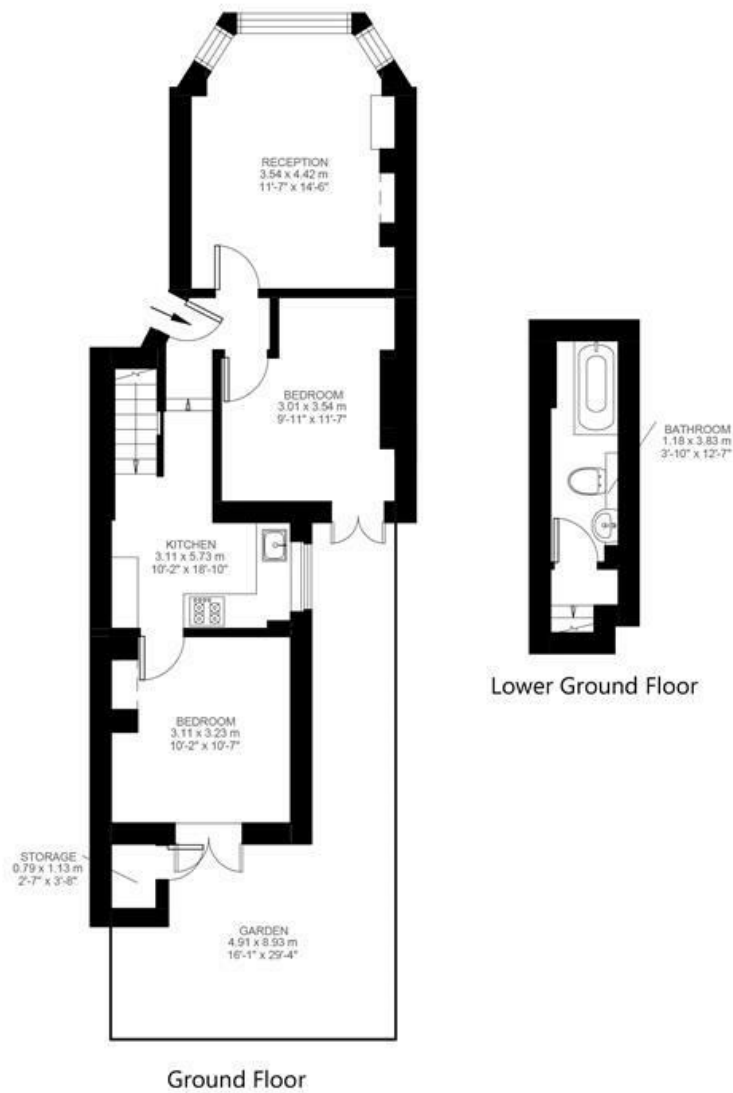
- Two double bedrooms
- Private South facing garden
- Victorian conversion
- Ground floor
- Bright and airy throughout
- Quiet residential road
- 2 minute stroll to Clapham High Street
- Northern & Victoria line
- Share of freehold

Council tax band D    EPC rating (null)



Kendoa Road, Clapham, SW4

Kendoa Road, Brixton, SW2  
2 Bedroom Flat



While we do try our very best, floor plans are produced as a guide only and we take no responsibility for the precise accuracy with which any property is represented

Kendoa Road, Clapham, SW4

