



Clapham Road, Clapham, SW9

3 bedroom flat - conversion for sale

£750,000

Leasehold

Property Details

At over 1,000 square feet with an impressively spacious kitchen and separate reception, this characterful conversion ticks boxes for many purchasers. The reception room is a magnificent space with high ceilings, exposed brickwork and a bay window. At the other end of the apartment, an impressive eat-in kitchen which could be configured as an open-plan living space, with the separate reception acting as the principal bedroom for any purchasers who require three bedrooms. The current principal bedroom is cosy and peaceful, tucked away at the rear looking into the gardens below with two large sash windows and plenty of built-in storage. Adjacent, the second double bedroom could be rented out, used as a guest room, home office, dressing room or nursery. A stylishly tiled, modern bathroom and separate WC complete this fantastic property. Further benefits include access to both the communal garden and roof terrace. Both are notable in size and predominantly South-West facing in position, allowing for all-day sun into the later hours of the day. This grand house is set back quietly from the road behind a sweeping driveway with first come, first served off-street parking with space for three cars.

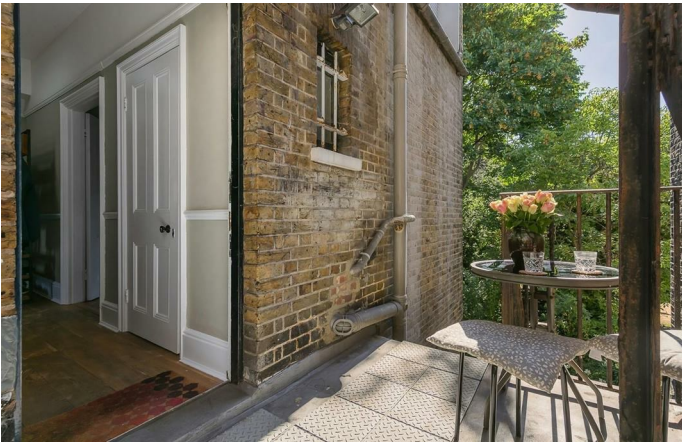
Features

- Three bedrooms
- Period conversion
- Over 1,000 square feet of internal space
- Large shared garden and roof terrace
- Bright, spacious and characterful
- Timber sash double glazed windows throughout
- Off street parking
- Clapham High Street, Brixton and Stockwell all within walking distance
- Northern Line, Victoria Line and London Overground
- Clapham Common a short stroll away

Council tax band D

EPC rating C (75)



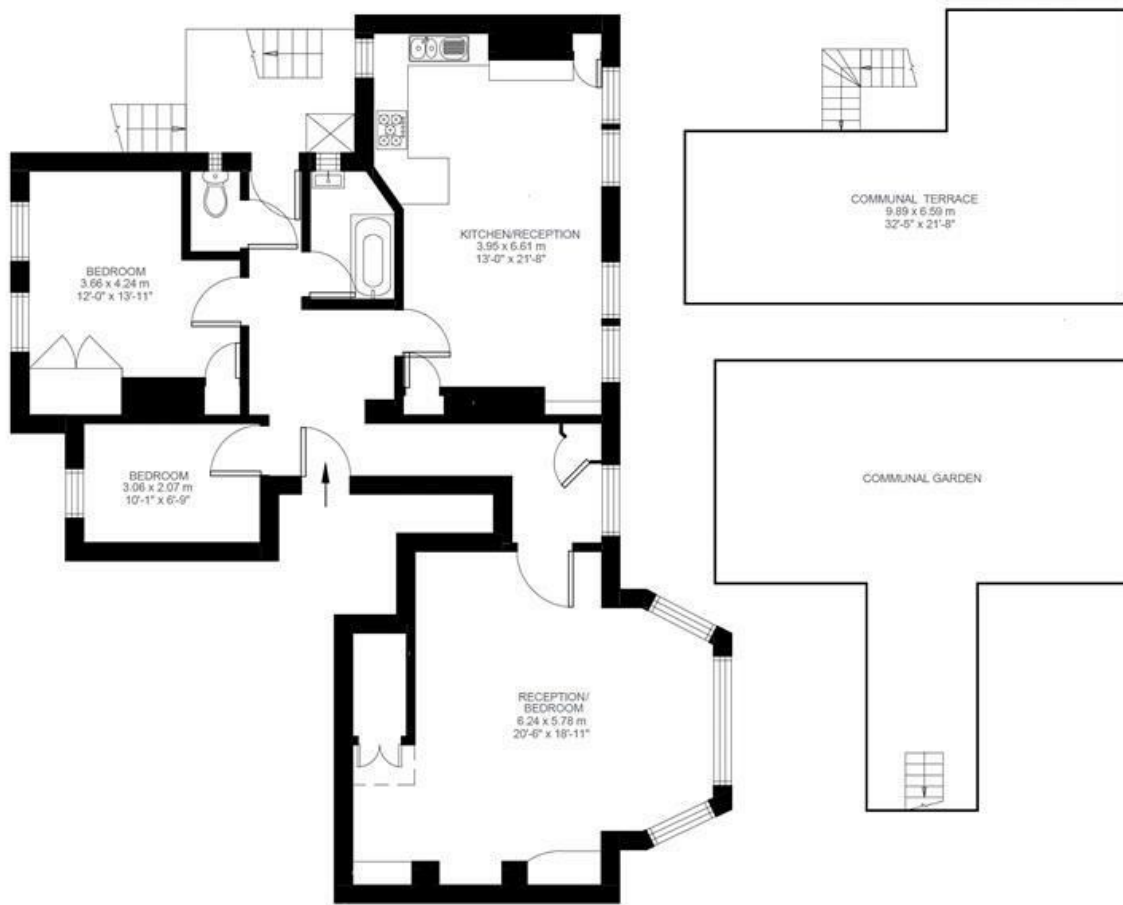


Clapham Road, Clapham, SW9

Clapham Road, Clapham, SW9

3 Bedroom Flat

Approximate internal area: **1061 sqft 99 sqm**



First Floor



While we do try our very best, floor plans are produced as a guide only and we take no responsibility for the precise accuracy with which any property is represented.

Clapham Road, Clapham, SW9

