



Sudbourne Road, Brixton, SW2

4 bedroom house for sale

£1,200,000

Freehold

Property Details

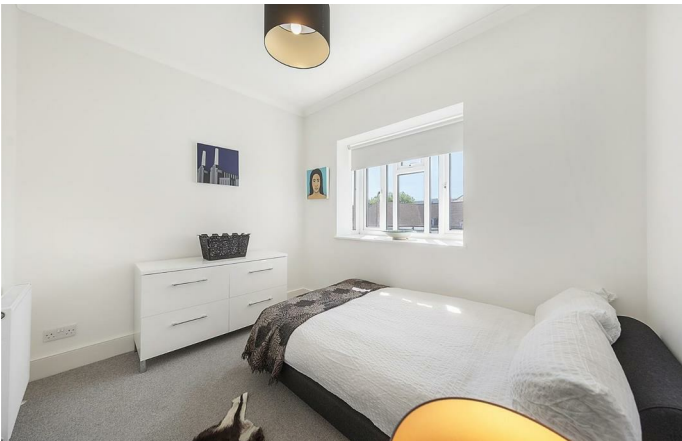
The ground floor of the property provides substantial entertaining space. An attractive separate reception sits at the front of the house which boasts high, corniced ceilings throughout and a beautifully bright and airy atmosphere. Adjacent, an impressive open-plan kitchen leads through to a sun-filled conservatory and out onto the pretty, low-maintenance private garden at the rear. A WC is also usefully tucked away off the entertaining space. The first floor comprises three double bedrooms, two are particularly large and the third would be ideal as a guest bedroom, nursery, home office or anything else the purchaser may require. A modern, family sized bathroom with a walk-in shower and separate bath completes this level of the property. An impressive principal suite sits across the second floor, a full-sized dressing room and a further generous family-sized en-suite bathroom. This stunning home is beautifully finished from top to bottom and ready to move into, with high quality fixtures and fittings and tasteful, neutral decor.

Features

- Four double bedrooms
- Period family home
- Over 1900 square feet of internal space
- Private rear garden
- Bright, airy and characterful throughout
- Sought-after location moments from two outstanding primary schools
- Walking distance to Brixton and Clapham High Streets
- Access to the Victoria and Northern tube lines
- Brockwell Park is a five-seven minute stroll
- Chain-free

Council tax band E EPC rating D (64)





Sudbourne Road, Brixton, SW2

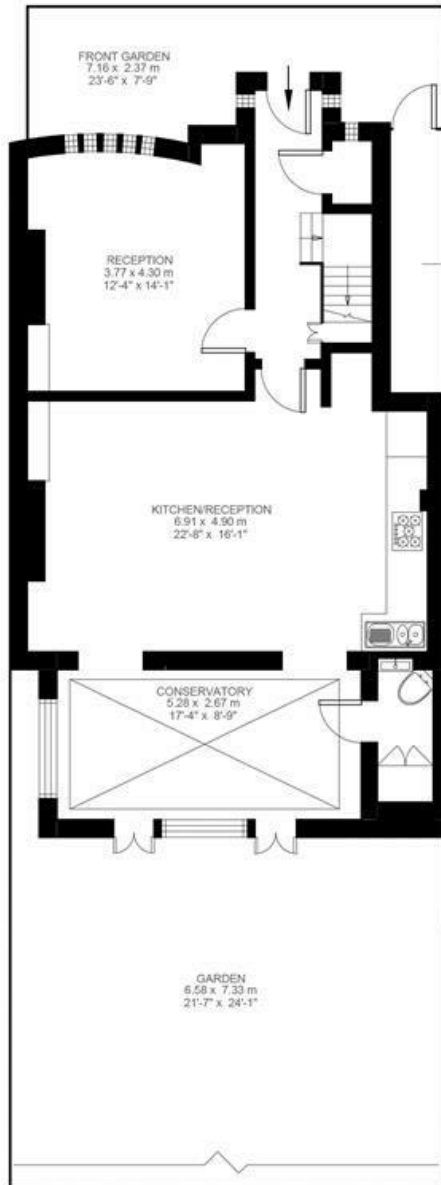
Sudbourne Road, Brixton, SW2

4 Bedroom House

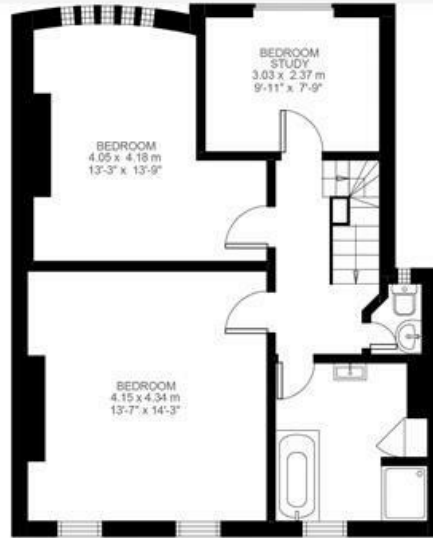
Approximate internal area: 1822 sqft 169 sqm

Approximate Eaves & Storage: 116 sqft 11 sqm

Approximate total internal area: 180 sqm 1935 sqft



Ground Floor



First Floor



Second Floor



While we do try our very best, floor plans are produced as a guide only and we take no responsibility for the precise accuracy with which any property is represented

Sudbourne Road, Brixton, SW2

