



Hubert Grove, Clapham, SW9

2 bedroom flat for sale

£650,000

Share of Freehold

Property Details

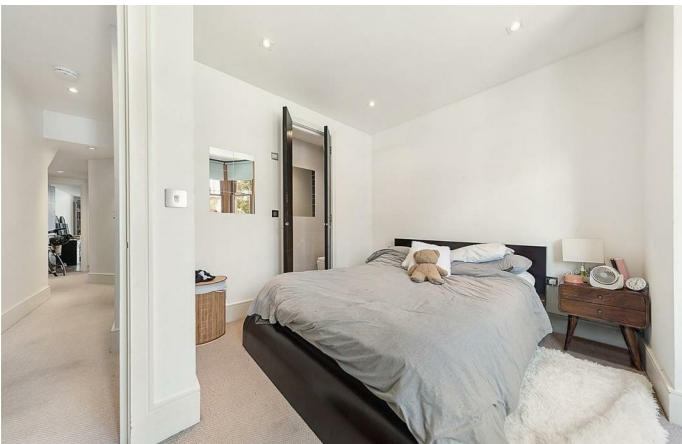
The heart of the home is the open-plan living space at the rear, a bright and airy room that seamlessly feeds through to the private garden, ideal for summer entertaining and providing a beautiful atmosphere within the flat. Generous dimensions allow for a comfortable lounge area, space to dine and a sleek, modern and fully integrated kitchen. Both bedrooms are well-proportioned doubles and fairly equal in size. Built-in storage is available in both rooms, one benefitting from an en-suite bathroom and the second boasts French doors out to a courtyard area. The flat is completed by a further, family sized modern bathroom.

staurants.

Council tax band C EPC rating D (64)

Features

- Two double bedrooms
- Two bathrooms
- Private garden
- Over 780 square feet of internal space
- Bright and airy throughout
- Demised basement
- Northern, Victoria Line and Clapham High Street station in easy reach
- Local amenities in minutes
- Share of freehold
- Chain-free



Hubert Grove, Clapham, SW9

Hubert Grove, Brixton, SW9

2 Bedroom Flat

Approximate internal area: 786 sqft 73 sqm



While we do try our very best, floor plans are produced as a guide only and we take no responsibility for the precise accuracy with which any property is represented.

Hubert Grove, Clapham, SW9

