



Loughborough Park, Brixton, SW9

2 bedroom flat - purpose built for sale

£585,000

Leasehold

Property Details

Almost 800 square feet of internal space has been considerably utilised and designed with modern living in mind. Each space is bright and airy with floor-to-ceiling windows and tasteful finishes throughout, creating a beautiful ambience within the home. The open-plan living area is the perfect spot for entertaining, relaxing and unwinding, opening onto a generous private terrace with views over the city. A cosy lounge area on one side and an impressive, fully-integrated modern kitchen on the other, with plenty of storage and a sleek dark gloss finish. Both bedrooms are well-proportioned doubles, one with an en-suite bathroom and the second is complete with built-in storage. A tasteful family-sized bathroom completes this delightful flat, which has plenty of storage options in the form of multiple hallway cupboards, ideal for storing away all those items unused on a regular basis.

Features

- Two double bedrooms
- Two bathrooms
- Almost 800 square feet of internal space
- Private terrace
- Designed with modern living in mind
- Bright, airy and tastefully finished
- Ideally located between Brixton and Heme Hill
- Within easy reach of Brockwell Park
- Chain free

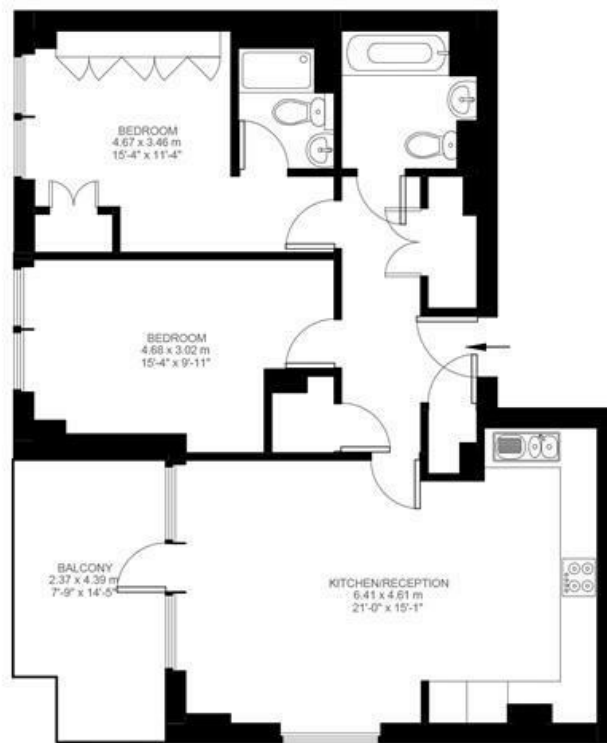
Council tax band D EPC rating B (83)



Loughborough Park, Stockwell, SW9

2 Bedroom Flat

Approximate internal area: **794 sqft 74 sqm**



Seventh Floor



While we do try our very best, floor plans are produced as a guide only and we take no responsibility for the precise accuracy with which any property is represented.

Loughborough Park, Brixton, SW9

