



Strathleven Road, Brixton, SW2

2 bedroom maisonette for sale

£520,000

Share of Freehold

Property Details

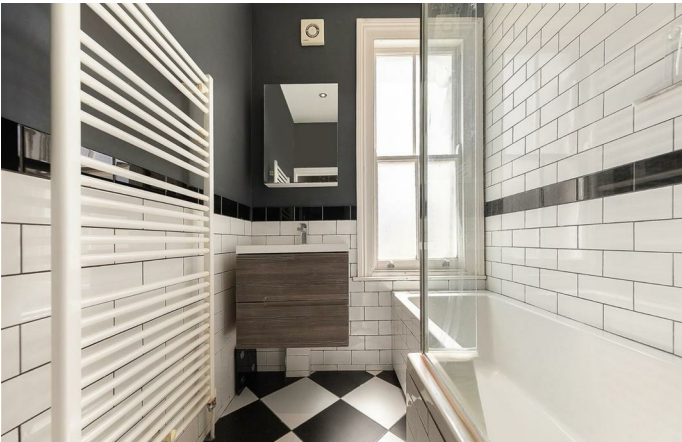
This charming property offers endearing period character throughout, with high ceilings, lovely feature fireplaces and large sash windows that flood each room with sunlight and fresh air. The spacious reception is perfect for entertaining, with comfortable dimensions to dine providing the perfect spot to host dinner parties and entertain guests. The separate kitchen is well-equipped and contemporary, providing plenty of storage options and a clever layout that maximises the square footage on offer. Both bedrooms are well-proportioned doubles and very similar in size, creating a perfect opportunity for anyone looking to rent an additional bedroom or share with friends. The rooms are both bright, airy and comfortable with great space for additional storage. The apartment is completed by a modern bathroom and separate W.C. The property also benefits from substantial demised loft space, perfect for storing all of those items that are not used on a regular basis. This charming and ideally located flat is in great condition throughout, offering tasteful décor and stylish finishes, ready to move into where the purchaser can stamp their own mark in time.

Council tax band D

EPC rating D (66)

Features

- Two double bedrooms
- Victorian maisonette with private entrance
- Almost 800 square feet of internal space
- Share of freehold
- Bright and airy throughout
- Demised loft
- Endearing period character
- Ideal location between Clapham and Brixton
- Local amenities in moments
- Chain-free



Strathleven Road, Brixton, SW2

Strathleven Road, Brixton, SW2

2 Bedroom Flat

Approximate internal area: **778 sqft 72 sqm**



First Floor



Entrance To First Floor



While we do try our very best, floor plans are produced as a guide only and we take no responsibility for the precise accuracy with which any property is represented.

Strathleven Road, Brixton, SW2

