



St. Saviour's Road, Brixton, SW2

2 bedroom flat - conversion for sale

£650,000

Share of Freehold

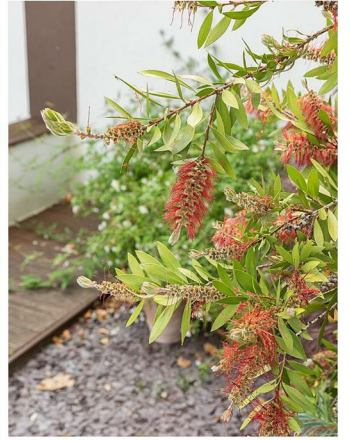
Property Details

Nestled within a detached original period building which has been carefully maintained and boasts an attractive façade, this impressive split-level flat enjoys its own private entrance and generous dimensions, measuring up at almost 900 square feet. The interior of the flat has an appealing modern style with luxury finishes including in-built speakers and underfloor heating. The spacious open-plan eat-in kitchen and reception room occupies the majority of the first floor and offers ample storage options, integrated appliances and dimensions for a generous dining table. This flexible room benefits from a large lightwell, flooding the room with natural light and adding to the sense of space. The lounge area overlooks the sunny private garden with glass sliding doors to allow a seamless flow from the living space out onto the low-maintenance outside space. A neat bathroom completes this floor. Arranged over the floor below are two well-proportioned double bedrooms, two further bathrooms and a practical utility area. The primary bedroom benefits from built-in storage, plantation shutters and a stunning en-suite bathroom with sliding frosted glass door. The second ample bedroom offers plantation shutters and further storage. The sleek family bathroom is entered via a sliding frosted glass door and benefits from both a double-ended bath and an integrated wet-room style shower. The entire flat has been finished in neutral, tasteful tones.

Features

- Two double bedrooms
- Two bathrooms plus w/c
- Stunning private garden
- Split-Level
- Own Front Door
- Sought-after location
- Minutes from Victoria line and Brockwell Park
- Share of Freehold
- Chain Free

Council tax band D EPC rating C (71)





St. Saviour's Road, Brixton, SW2

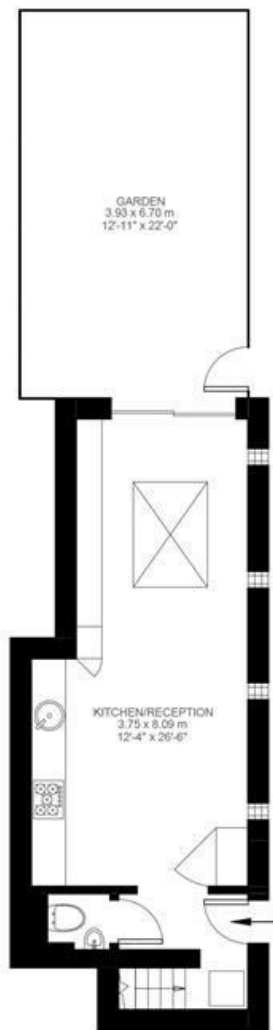
St. Saviours Road, Brixton, SW2

2 Bedroom Flat

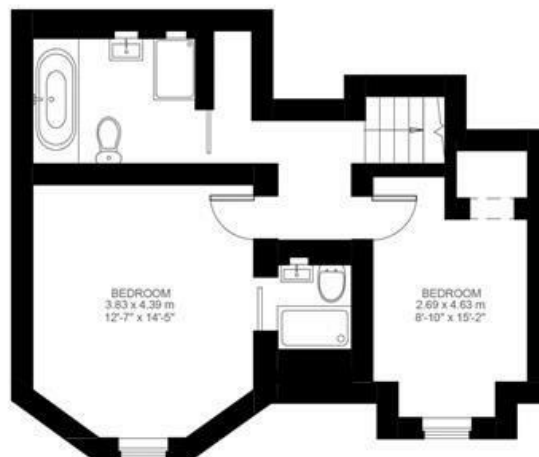
Approximate internal area: **886 sqft 82 sqm**

Approximate Cellar: **25 sqft 2 sqm**

Approximate total internal area: **84 sqm 907 sqft**



Ground Floor



Lower Ground Floor



While we do try our very best, floor plans are produced as a guide only and we take no responsibility for the precise accuracy with which any property is represented.

St. Saviour's Road, Brixton, SW2

