

Effra Parade, London, SW2

3 bedroom house - terraced for sale

£899,950

Freehold

Property Details

A charming three double bedroom terraced house ideally located next to Poets Corner, the highly sought after residential pocket of roads between Brixton and Herne Hill. Brockwell Park is a short stroll and there are a selection of popular schools close-by. The property comprises a double aspect reception room, an extended eat-in kitchen, a twenty-two foot South East facing garden, three comfortable double bedrooms and a family bathroom. The property boasts over 1100 square feet of internal living space with the possibility of extending into the loft and out into the side return. Chain free.

Council tax band E

EPC rating D (55)

Features

- 22 foot south-east facing garden
- Original characterful features
- Very close to Brockwell park
- Flat fronted Victorian house
- Sought after Poets corner location



Effra Parade, London, SW2



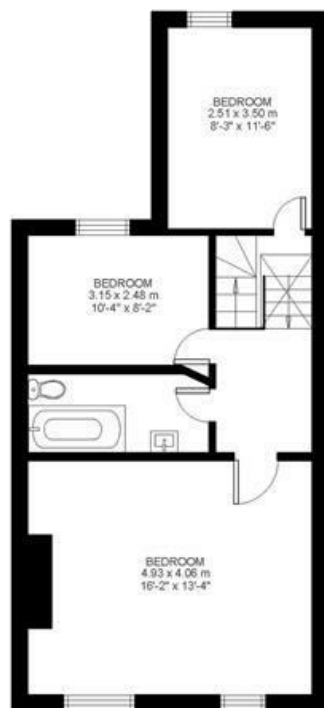
3 Bed house

Approx internal area:

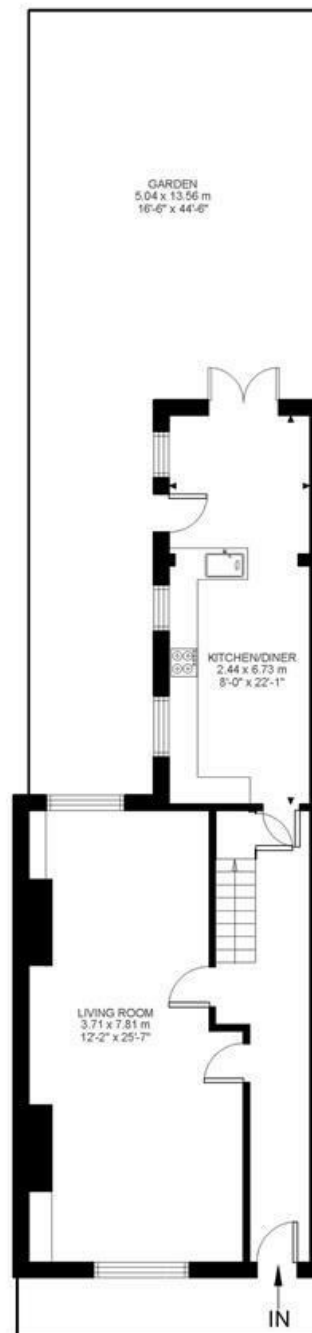
1109 sqft 103 sqm

While we do try our very best, floor plans are produced as a guide only and we take no responsibility for the precise accuracy with which any property is represented

Effra Parade



First Floor



Ground Floor



Effra Parade, London, SW2

