



Coldharbour Lane, SW9

2 bedroom flat to let

£380 Per Week

Furnished

Property Details

Presenting this sleek two bedroom flat situated around a three minute walk to Lough Junction station. This stunning flat comprises a bright and modern kitchen, a separate cozy reception, two bedrooms and a contemporary bathroom with a walk in shower. Living here you'll be around a ten minute walk from Brixton high street and all that it has to offer in terms of restaurants, shops and bars to enjoy. This property is ideal for two professional sharers looking for comfort and convenience at your door step.

Features

- Two bedrooms
- Around a 3 minute walk to Loughborough Junction station
- Separate reception
- Bright and airy
- Around a 10 minute walk to Brixton high street

Council tax band EPC rating D (67)





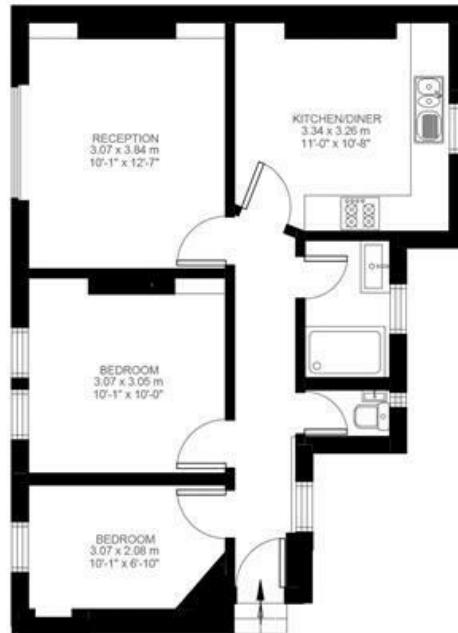
Coldharbour Lane

2 Bedroom Flat

Approx internal area:

544 sqft 51 sqm

While we do try our very best, floor plans are produced as a guide only and we take no responsibility for the precise accuracy with which any property is represented



Second Floor



Coldharbour Lane, SW9

