

Acre Lane, Brixton, SW2

2 bedroom flat - purpose built for sale

£650,000

Leasehold

Property Details

The flat has an expensive, high-quality feel from head-to-toe. The open-plan reception is a fantastic space in which to relax and unwind, cook and dine plus the ideal area to entertain guests. The modern integrated kitchen is sleek and stylish, with a trendy kitchen island and comfortable dimensions for dining. Parquet flooring runs the length of the room, adjacent to the kitchen a cosy lounge area. The bedrooms are fairly equal in size and both benefit from built-in storage options. They are conveniently located at opposite ends of the flat, providing a desirable level of privacy - perfect for anyone looking to share with a friend or let the spare room. The initial bedroom offers a modern en-suite bathroom and a further family-sized luxury bathroom conveniently neighbours the further bedroom. The flat is in pristine condition and decorated in tasteful, neutral tones, ready to move into immediately where the purchaser can integrate their own style over time.

Features

- Two double bedrooms
- Two bathrooms
- Stunning Art-Deco style modern build
- Over 850 square feet of internal space
- High-end finishes and tasteful design throughout
- Lift and bike storage
- Central Brixton, moments from Brixton tube station and Brixton Village
- First stop on the Victoria line
- A short stroll to Brockwell Park
- Chain-free

Council tax band D EPC rating C (80)



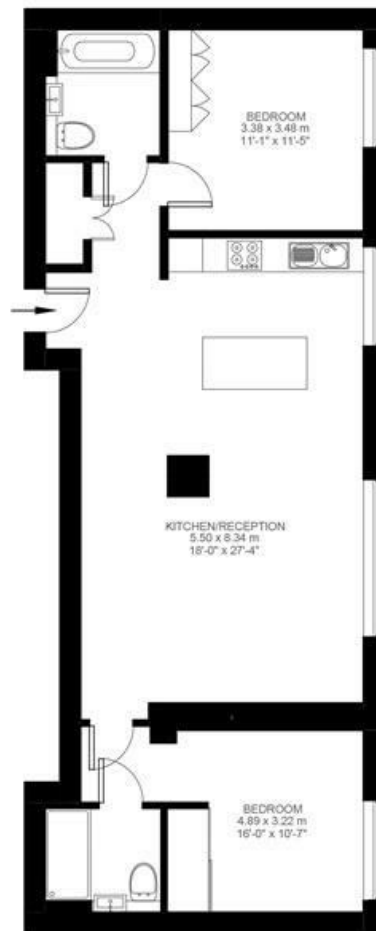


Acre Lane, Brixton, SW2

Acre Lane, Brixton, SW2

2 Bedroom Flat

Approximate internal area: 854 sqft 79 sqm



First Floor



While we do try our very best, floor plans are produced as a guide only and we take no responsibility for the precise accuracy with which any property is represented.

Acre Lane, Brixton, SW2

