



Park Heights, Robsart Street, Brixton, SW9

1 bedroom flat - penthouse for sale

£475,000

Leasehold

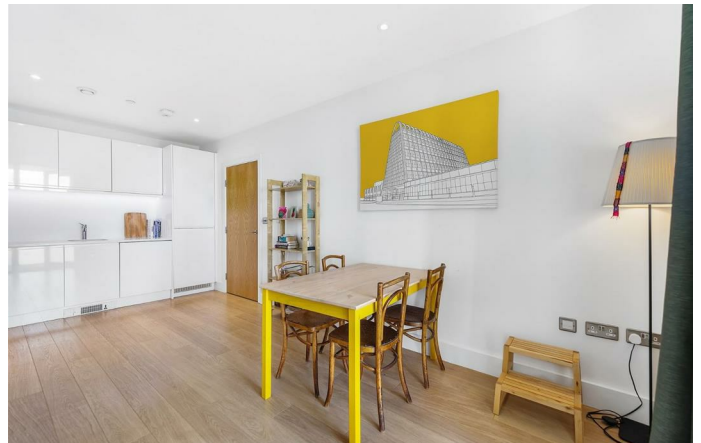
Property Details

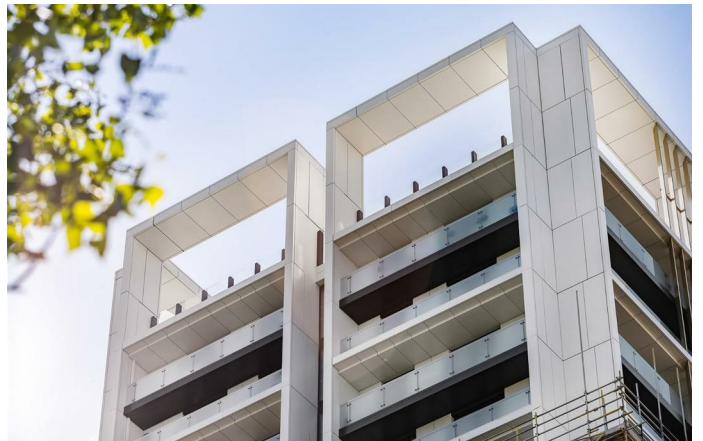
A stunning chain-free one double bedroom penthouse apartment for sale on the top floor of a luxury secure modern development with breath-taking panoramic views of the London skyline. Park Heights benefits from excellent transport links with access to both the Northern and Victoria tube lines at Brixton and Stockwell tube stations within a ten-minute walk. The amazing views allow this apartment to stand out from the competition. The reception room is L-shaped and a great size, benefitting from all the advantages of modern open plan living but also allowing some separation between the living area and contemporary kitchen, with ample space to both relax and dine. The property has a beautifully finished bathroom and a large storage cupboard in the hallway. Last but not least the bedroom is a comfortable double room with additional built-in storage. Other selling points include lift access, a 10-year building warranty, handy secure bike storage, a 24 hour concierge and a large shared terrace on the top of the building that offers 360 degree views out across London.

Features

- One Double Bedroom
- Secure modern development with 10 year building guarantee
- Nearly 550 square feet of internal living space
- Top floor penthouse
- Absolutely stunning panoramic views
- Private balcony spanning the width of the property
- Communal roof terrace with 360 degree views
- 24 hour concierge and lift
- Walking distance to the Victoria and Northern tube lines
- Opposite the park

Council tax band C EPC rating B (82)





K

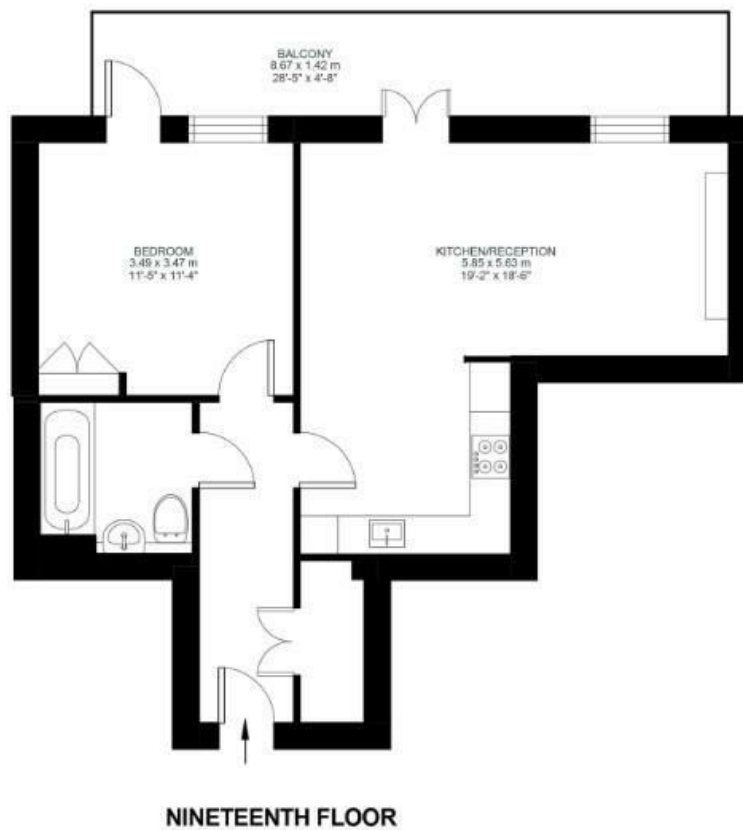
Robsart Street

1 Bed Flat

Approx internal area:

544 sqft 51 sqm

While we do try our very best, floor plans are produced as a guide only and we take no responsibility for the precise accuracy with which any property is represented



Park Heights, Robsart Street, Brixton, SW9

