

Coldharbour Lane, Brixton, SW9

2 bedroom flat - conversion to let

£450 Per Week

Part furnished

Property Details

A truly glorious example of a two double bedroom apartment, occupying the ground floor of a grand detached Georgian house, on Coldharbour Lane.

The meticulous care that has been applied to this property amplifies it's original Georgian charm. The floor to ceiling double glass windows with wooden shutters act as a Juliette balcony in the reception room, allowing air and natural light to flood this handsome room and filter back into the modern, open-plan kitchen. Tucked away behind the kitchen is a generously sized conservatory, boasting views of Loughborough Park and providing dual aspect lighting throughout the ground floor.

The two double bedrooms reside on the opposite side of the hallway, the master occupies the front room, with the same gorgeous floor to ceiling glass windows as the reception and it benefits from two built-in wardrobes and a feature ceiling. The rear bedroom overlooks leafy Loughborough Park.

The gated front garden provides ample space for parking and a spot to enjoy the warmer months out the front of the property. The property also benefits from plenty of storage. Transport links are as good as you can get in South London. With both Brixton Tube (Victoria Line) an 8-minute walk away and Loughborough Junction (Thameslink) only around a four-minute walk, you can navigate all of London with ease.

Features

- Two double bedrooms
- Georgian conversion
- Bright and airy
- Conservatory overlooking Loughborough Park
- Off-street parking
- Short walk to central Brixton
- Close to transport links

Council tax band C EPC rating D (60)



Coldharbour Lane, Brixton, SW9

K

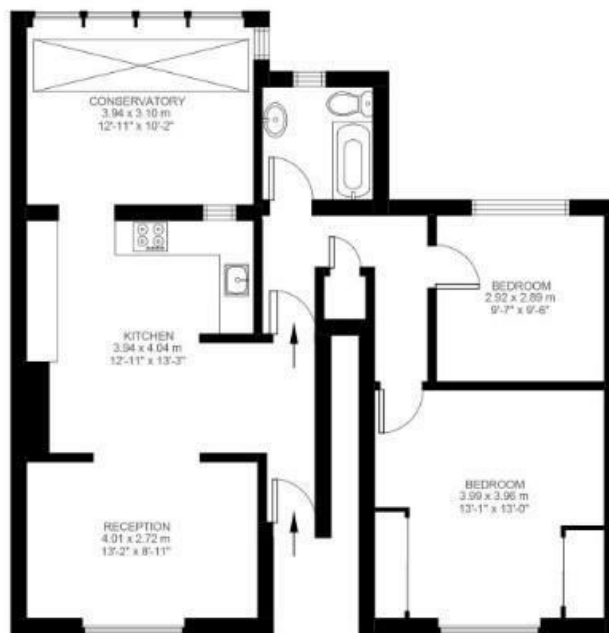
Coldharbour Lane

2 Bedroom Flat

Approx internal area:

878 sqft 82 sqm

While we do try our very best, floor plans are produced as a guide only and we take no responsibility for the precise accuracy with which any property is represented



Ground Floor



Coldharbour Lane, Brixton, SW9

