

Bonham Road, Brixton, SW2

3 bedroom flat to let

£650

Furnished

Property Details

A beautifully finished three double bedroom garden flat on a quiet, tree-lined residential road (in a popular location within walking distance to Brixton and Clapham High Streets. Set on the ground floor of a double-fronted Victorian townhouse, offers incredible living space with beautiful features and a bright, airy atmosphere throughout: high, corniced ceilings and a large bay window add to the appeal of the reception room, which feeds through to a well-equipped modern kitchen, offering a range cooker and abundant storage options. An attractive conservatory follow on, currently occupied as a dining room and providing access onto the spacious, low-maintenance, private garden.

All three bedrooms are similar well-proportioned doubles, the largest of the three boasts a bay window and significant built-in storage. The other two are peacefully positioned facing the rear garden and neighbour the stylish family-sized bathroom, complete with free-standing bath tub and walk-in shower. Having access to private outside space is more important than ever and this beautiful East facing garden feels worlds away from the hustle and bustle of city life. Ideal for use throughout the warmer months, it truly is a wonderful environment to host garden parties and entertain.

Bonham Road is an aesthetically pleasing street, located between vibrant Brixton Hill and

Features

- Three double bedrooms
- Private garden
- Victorian double fronted conversion
- Beautifully presented, bright and airy throughout
- Access to the Victoria and Northern tube lines
- Quiet residential street located between Brixton and Clapham High Streets

Council tax band D EPC rating D (60)

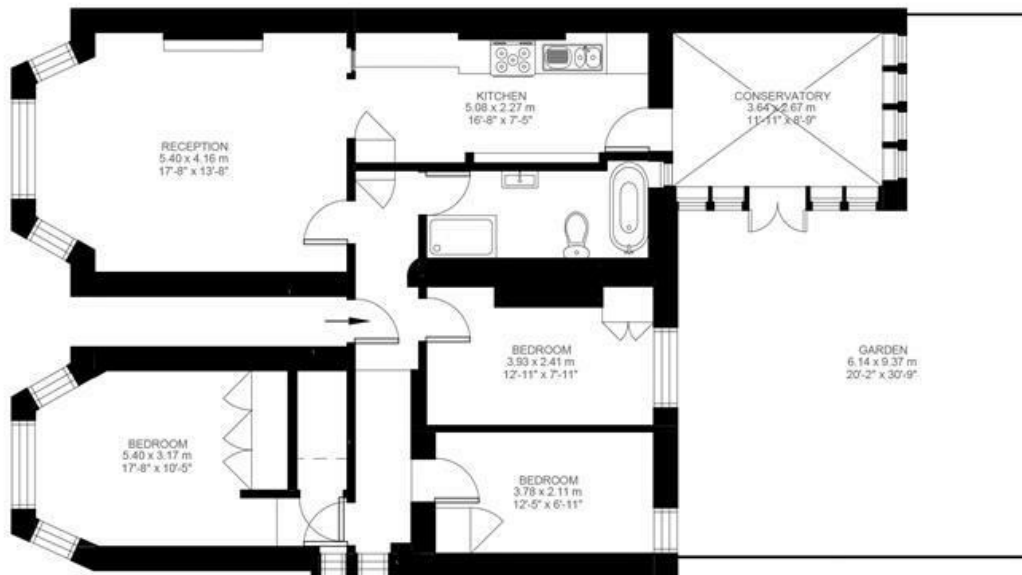


Bonham Road, Brixton, SW2

Bonham Road, Brixton SW2

3 Bedroom Flat

Approximate internal area: **1056 sqft 98 sqm**



Ground Floor



While we do try our very best, floor plans are produced as a guide only and we take no responsibility for the precise accuracy with which any property is represented.

Bonham Road, Brixton, SW2

