

Corrance Road, Brixton, SW2

3 bedroom flat - conversion for sale

£699,950

Share of Freehold

Property Details

Boasting over 1000 square feet and split over two levels, this fantastic property truly feels like a home from the moment you walk through the door. The open-plan reception on the first floor is a particularly appealing space, boasting a stylish modern kitchen with new integrated appliances, space to dine and a charming lounge area nestled at the front and flooded with light from the large bay window. High ceilings with trendy light fixtures and a fantastic exposed brick feature wall all add to the charm of the space. Tucked away at the rear of the building, a family-sized bathroom and one of the three comfortable double bedrooms. The second floor comprises two further generous doubles, one nestled next to a further modern bathroom and the property is completed by an impressive loft-style room, complete with a pretty Juliet balcony and multiple Velux windows.

Features

- Three double bedrooms
- Over 1000 square feet of internal space
- Split-level Victorian conversion
- Juliet balcony
- Two bathrooms
- Beautifully finished throughout
- Ideally located between Clapham and Brixton High Streets
- Victoria and Northern lines
- Local amenities of Acre Lane
- Share of freehold & chain-free

Council tax band D

EPC rating D (68)

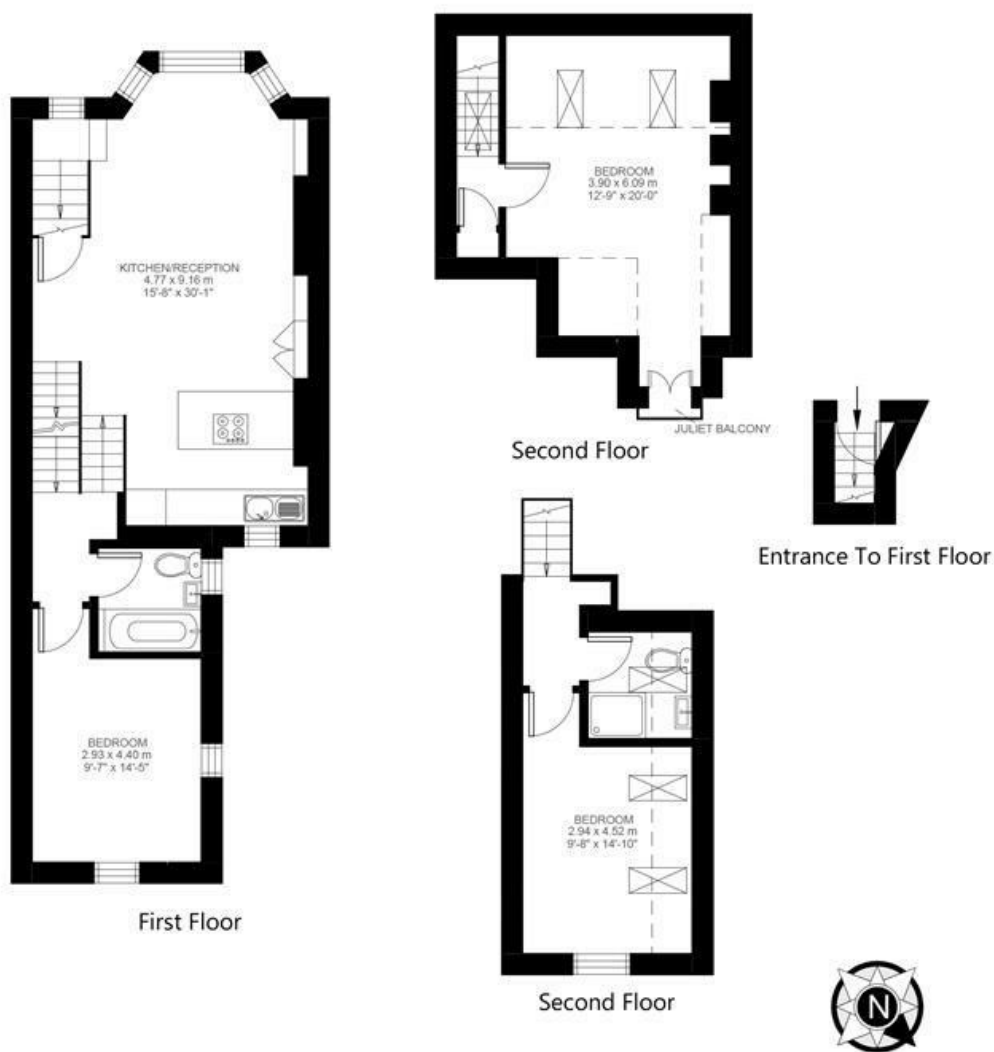


Corrance Road, Brixton, SW2

Corrance Road, Brixton, SW2

3 Bedroom Flat

Approximate internal area: 1030 sqft 96 sqm



While we do try our very best, floor plans are produced as a guide only and we take no responsibility for the precise accuracy with which any property is represented.

Corrance Road, Brixton, SW2

