

**Ferndale Road, Brixton, SW9**

2 bedroom flat - purpose built for sale

£400,000

Leasehold

Property Details

Boasting views across the surrounding area and down onto the pretty communal gardens below, this delightful two double bedroom flat is flooded with natural light, benefits from double glazing and offers almost 730 square feet of well-distributed living space. The bedrooms sit at opposite ends of the property, providing a desirable level of privacy, ideal for sharers. Both spaces are comfortable doubles with plenty of space for storage options. The reception is also spacious, bright and airy, perfect for relaxing and unwinding or entertaining guests. A well-equipped contemporary kitchen with plenty of storage and a family-sized bathroom complete this delightful flat.

Council tax band B **EPC rating (null)**

Features

- Two double bedrooms
- Almost 730 square feet of internal space
- Popular purpose-built block
- Fourth floor
- Bright and airy throughout
- Residential parking
- CCTV and communal gardens
- Minutes from central Brixton and a short stroll to Clapham High Street
- Victoria Line, Northern Line and the Overground all within easy reach

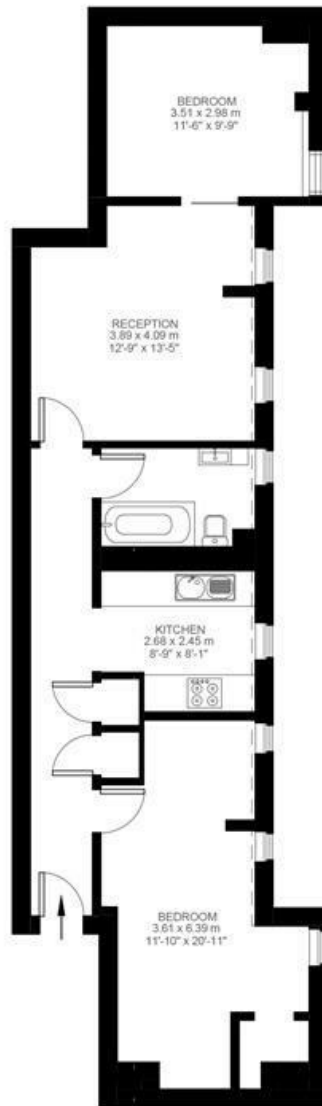


Ferndale Road, Brixton, SW9

Ferndale Road, Stockwell, SW9

2 Bedroom Flat

Approximate internal area: 727 sqft 68 sqm



Fourth Floor



While we do try our very best, floor plans are produced as a guide only and we take no responsibility for the precise accuracy with which any property is represented.

Ferndale Road, Brixton, SW9

