



Trinity Rise, Herne Hill, SW2

3 bedroom flat - conversion for sale

£720,000

Share of Freehold

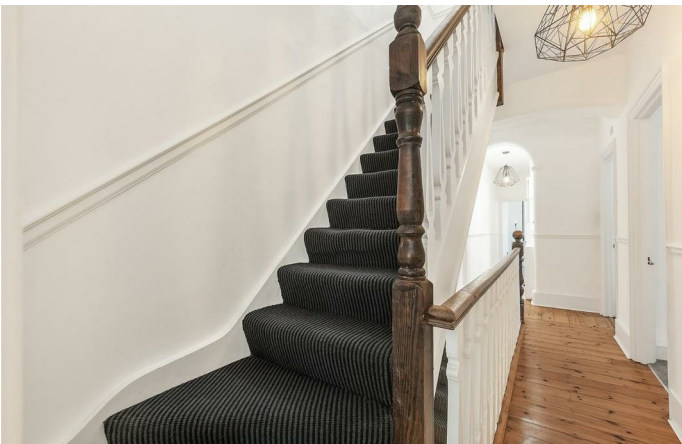
Property Details

This lovely flat offers generous proportions and benefits from a light and airy atmosphere, split over the top two floors of this handsome period property. There is a substantial reception room occupying the top floor of the property, bright and airy with vaulted ceilings and French doors that open out onto the large roof terrace at the rear. There is ample room to relax, dine and entertain, inside or out, this inviting room is sure to be used on a regular basis. A separate kitchen on the floor below offers partially integrated appliances, maximising on the square footage available whilst also offering great storage options. The three bedrooms are all arranged over the first floor. All three are well-proportioned doubles, the largest spanning the entire width of the building with a square bay window and stain glass window box. The second two are peacefully positioned overlooking the gardens at the rear and the flat is completed by an appealing family sized bathroom, complete with a separate bath tub and walk-in shower.

Features

- Three double bedrooms
- Private roof terrace
- Split-level
- 1150 square feet of internal space
- Period conversion
- Bright and airy throughout
- Sought-after road running parallel to Brockwell Park
- Local amenities of Herne Hill
- Share of freehold
- Chain-free

Council tax band C EPC rating D (64)





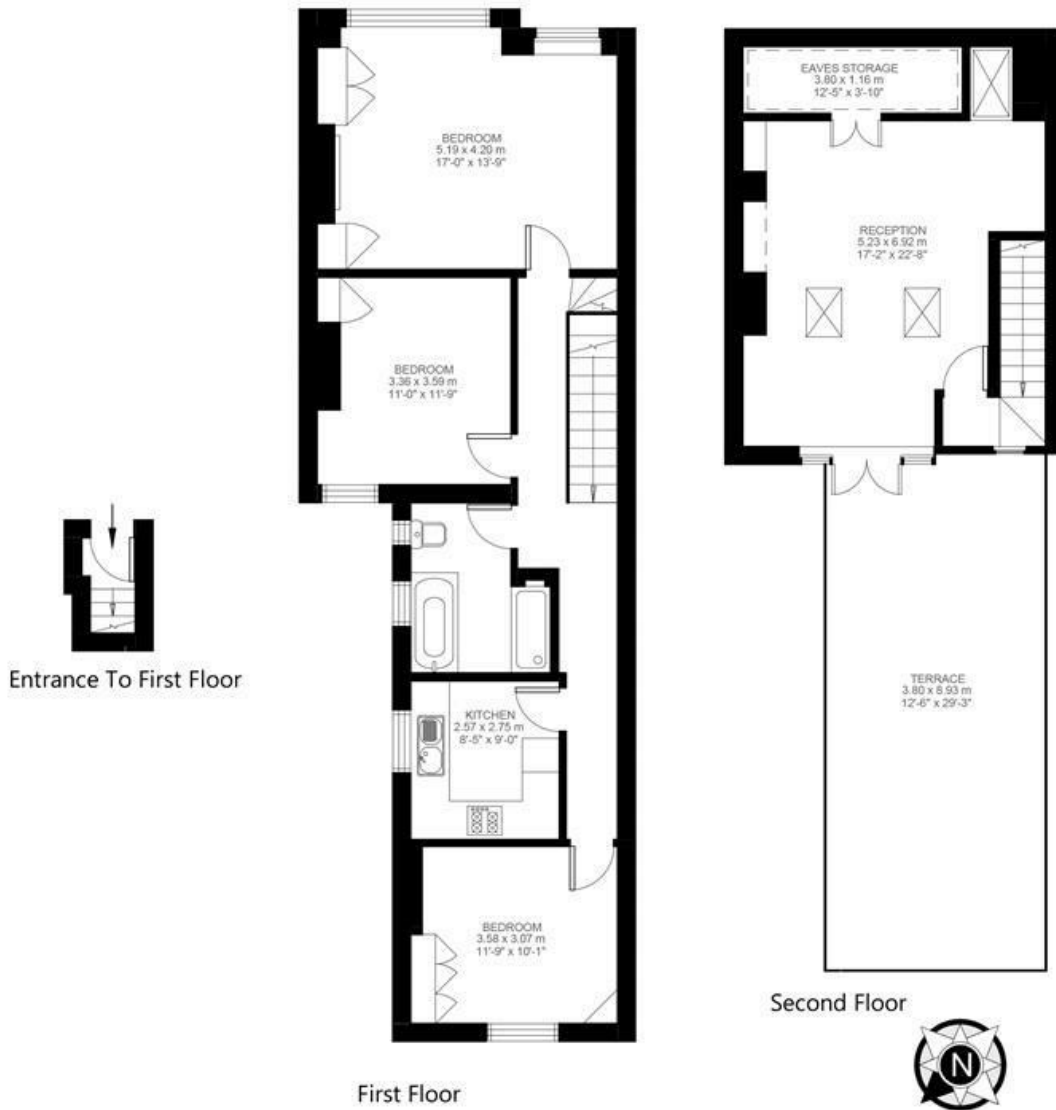
Trinity Rise, Herne Hill, SW2

Trinity Rise, Herne Hill, SW2

3 Bedroom Flat

Approximate eaves storage: **47 sqft 4 sqm**

Approximate internal area: **1150 sqft 107 sqm** Approximate total internal area: **111 sqm 1199 sqft**



While we do try our very best, floor plans are produced as a guide only and we take no responsibility for the precise accuracy with which any property is represented.

Trinity Rise, Herne Hill, SW2

