



Saltoun Road, Brixton, SW2

2 bedroom flat - conversion for sale

£520,000

Share of Freehold

Property Details

Offering a beautiful open-plan living space at the front, with two double bedrooms peacefully tucked at the rear, the property maximises the square footage on offer. The entertaining space is truly delightful, high ceilings with a bright and airy atmosphere, comfortable dimensions to dine, lounge and host guests with an attractive shaker-style kitchen. The living room is packed full of characterful features with a bay window, the original chimney breast and solid wooden refurbished floorboards. The two bedrooms are both comfortable double bedrooms, the principal being particularly spacious, and they are both complete with custom-made wardrobes. A contemporary bathroom sits between the two bedrooms, which are conveniently separated, offering a desirable level of privacy – perfect for sharing with friends or letting the spare room.

Features

- Two double bedrooms
- Victorian conversion
- Beautifully presented
- Bright, airy and characterful
- First floor
- Nestled in the heart of Brixton, moments from Brixton Village
- First stop on the Victoria line
- Close to Brockwell Park
- Share of freehold
- Chain-free

Council tax band C EPC rating C (73)

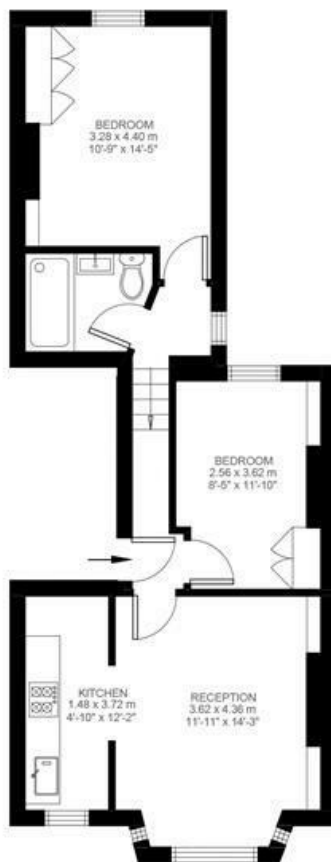


Saltoun Road, Brixton, SW2

Saltoun Road, Brixton, SW2

2 Bedroom Flat

Approximate internal area: **570 sqft 53 sqm**



First Floor



While we do try our very best, floor plans are produced as a guide only and we take no responsibility for the precise accuracy with which any property is represented.

Saltoun Road, Brixton, SW2

