



**Wingford Road, Brixton, SW2**

2 bedroom maisonette for sale

**£495,000**

Share of Freehold

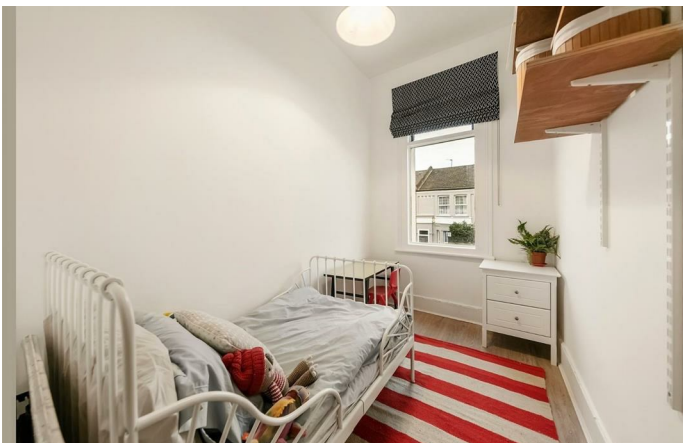
## Property Details

The open-plan reception, centrally located offers the perfect space in which to relax and unwind, dine and entertain, off which both bedrooms are accessed. The principal bedroom is particularly spacious and complete with plenty of built-in storage. The neighbouring second bedroom is perfect as a guest room, nursery, home office or anything else the purchaser may require. The bathroom has been recently fitted and is complete with tasteful, stylish finishes. Providing generous storage options and surface space, the recently fitted kitchen benefits from integrated appliances and trendy fixtures that perfectly complement the shaker-style units. At the rear of the property, a balcony area provides access to a convenient storage cupboard and access onto the secluded, private and low-maintenance rear garden.

## Features

- Two bedrooms
- Private garden
- Period property
- Private entrance
- Over 600 square feet of internal space
- Quiet residential street close to local amenities
- Walking distance to the Victoria and Northern tube lines
- Potential to extend (STPP)
- Share of freehold

Council tax band B    EPC rating D (62)



Wingford Road, Brixton, SW2

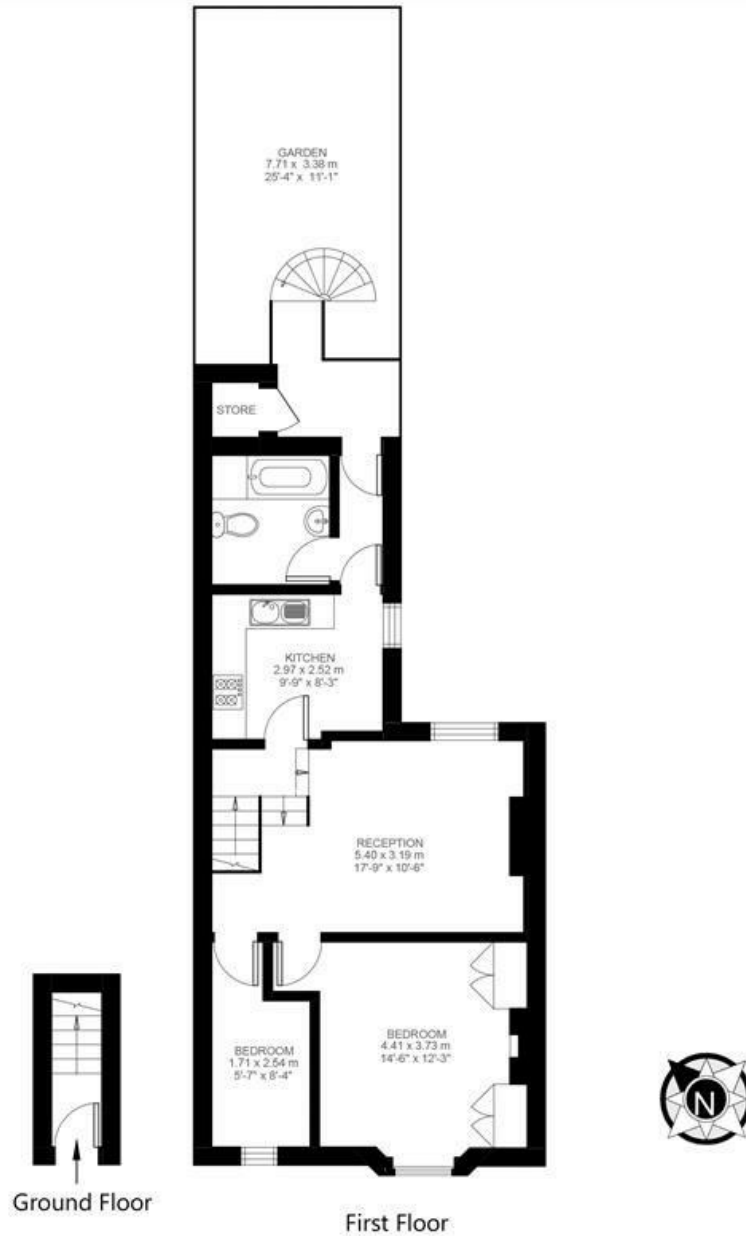
Wingford Road, Brixton Hill, SW2

2 Bedroom Flat

Approximate internal area: **600 sqft 56 sqm**

Approximate store: **9 sqft 1 sqm**

Approximate total internal area: **57 sqm 609 sqft**



While we do try our very best, floor plans are produced as a guide only and we take no responsibility for the precise accuracy with which any property is represented.

Wingford Road, Brixton, SW2

