



Horsford Road, Brixton, SW2

4 bedroom house - terraced for sale

£875,000

Freehold

Property Details

A fantastic opportunity to purchase a freehold terraced house on Horsford Road, ideally located off Brixton Hill on a popular residential road between two outstanding Ofsted-rated primary schools. The property comprises a stunning double aspect open plan reception room with glass doors that allow the living space to flow seamlessly onto the private rear garden, four double bedrooms downstairs WC and two family bathrooms. Horsford Road is situated an eight-minute stroll to central Brixton, and a five-minute stroll to the green open spaces of Brockwell Park. A fourteen-minute walk across the park brings you to Herne Hill station and the many pubs, cafes and restaurants of leafy Herne Hill. Sudbourne School and Corpus Christi primary schools are within a few minutes' walk and Clapham High Street is also within a fifteen-minute stroll, covering the wants and needs of the majority of purchasers.

Council tax band E EPC rating D (66)

Features

- Four double bedrooms
- Two bathrooms
- Freehold terrace house
- Ample built-in storage
- 1,300 square feet of internal space
- Private garden
- Sought-after location between two outstanding primary schools
- A short walk to Brockwell Park



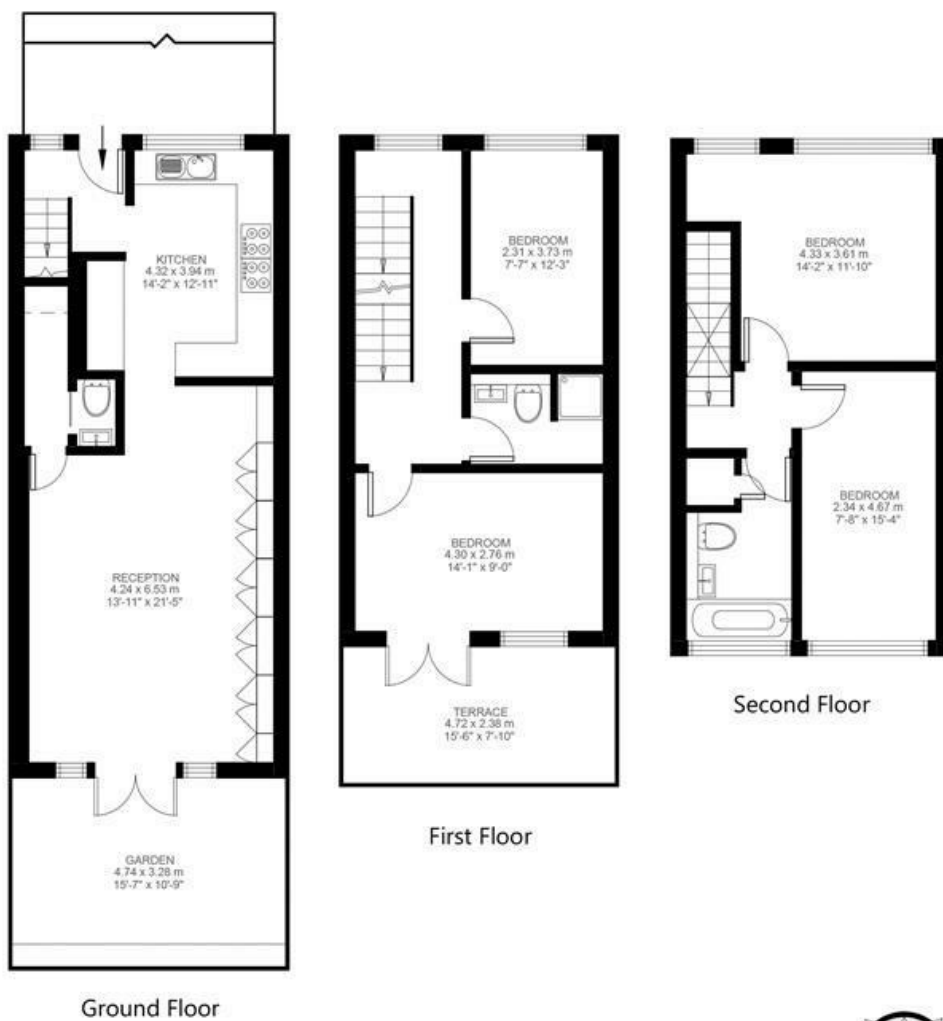


Horsford Road, Brixton, SW2

Horsford Road, Brixton, SW2

4 Bedroom House

Approximate internal area: 1291 sqft 120 sqm



While we do try our very best, floor plans are produced as a guide only and we take no responsibility for the precise accuracy with which any property is represented.

Horsford Road, Brixton, SW2

