



## Canterbury Crescent, Brixton, SW9

2 bedroom flat - conversion for sale

£580,000

Leasehold

### Property Details

At over 810 square feet, the property is well-proportioned with characterful features that include high ceilings, a timber sash bay window and wooden flooring. The living space is fantastic for entertaining and flows seamlessly through to an eat-in kitchen diner. The cosy lounge area is flooded with natural light through the double glazed bay window and the kitchen offers generous storage options and surface space, ideal for hosting dinner parties. The two double bedrooms are both comfortable doubles peacefully positioned overlooking the private rear garden. The larger of the two bedrooms benefits from an en-suite bathroom and direct garden access, allowing fresh air to stream into the room, contributing to the airy atmosphere throughout. The two bedrooms have built-in storage and last but not least, there is a modern family bathroom that completes the property. Private outside space is more important than ever and the South-West facing private rear garden is the perfect area to relax and enjoy the warmer months. This charming property is an exciting blank canvas, ready to move into where the purchaser can stamp their own mark over time.

### Features

- Two double bedrooms
- Two bathrooms
- Private South-West facing garden
- Over 800 square feet of internal space
- Victorian mansion block
- Double-glazed timber sash windows throughout
- Bright, airy and characterful
- Situated in the heart of Brixton
- Moments from the Victoria line
- Chain-free

Council tax band D    EPC rating D (64)



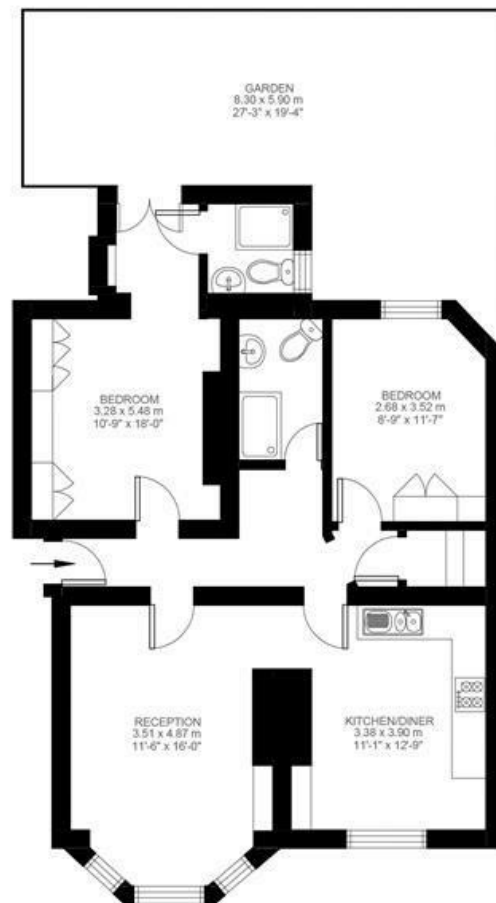


Canterbury Crescent, Brixton, SW9

**Canterbury Crescent, Stockwell, SW9**

**2 Bedroom Flat**

Approximate internal area: **811 sqft 75 sqm**



Ground Floor



While we do try our very best, floor plans are produced as a guide only and we take no responsibility for the precise accuracy with which any property is represented.

Canterbury Crescent, Brixton, SW9

