**Jelf Road, Brixton, SW2**

2 bedroom flat - conversion to let

£430 Per Week

Part furnished

Property Details

This is a fantastic two double bedroom flat situated just minutes from Brockwell Park, with its lido, gardens and gorgeous views. The property comprises of a spacious modern eat-in kitchen a separate reception room which opens out onto the patio garden through double doors, two spacious double bedrooms and also a family size bathroom. Brixton is a short walk away with an array of pubs, shops, markets, transport links and fantastic nightlife.

Features

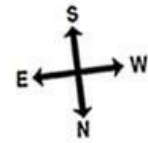
- Private garden
- Light and Airy
- Victorian
- Close to transport links
- Close to Brockwell Park

Council tax band C EPC rating C (69)

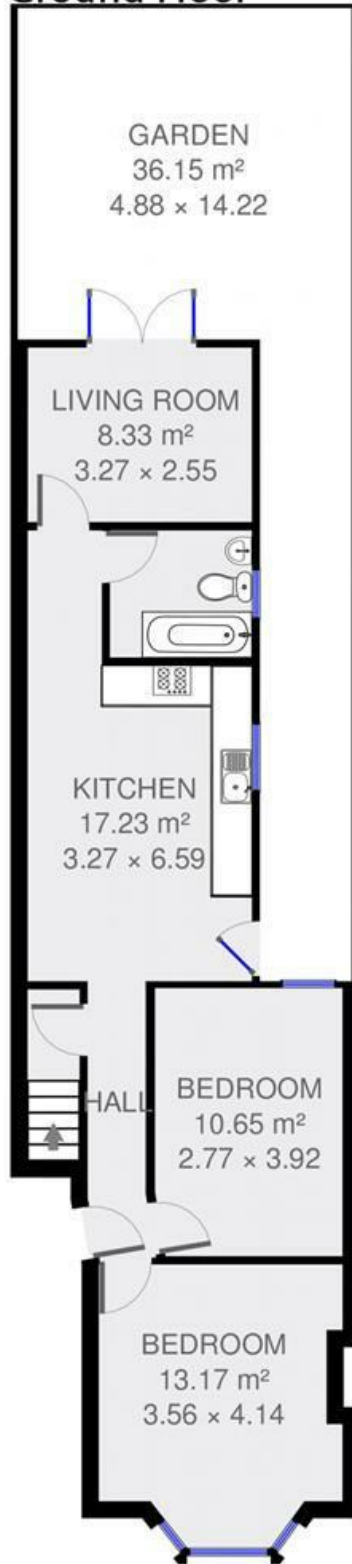


Jelf Road, Brixton, SW2

Jelf Road



Ground Floor



2 bed Flat.

Approx internal area:

732 sqft 68 sqm

While we do try our very best, floor plans are produced as a guide only and we take no responsibility for the precise accuracy with which any property is represented

Jelf Road, Brixton, SW2

