



Lavender Gardens, Clapham, SW11

1 bedroom flat - conversion for sale

£470,000

Leasehold

Property Details

Lavender Gardens is a desirable road nestled between the green open spaces of Clapham Common and Battersea Park. A short stroll from Clapham Junction Station, Clapham South and Clapham Common Tube stations, this split-level apartment will appeal to a wide range of potential purchasers. A fantastic open-plan reception at the front of the building offers ample dimensions to lounge, dine and entertain with a modern, stylish and integrated kitchen and comfortable space for a dining table. The bedroom is peacefully nestled at the rear, overlooking the neighbouring gardens below and the apartment is completed by a modern, sleek bathroom. The property is situated in a popular location and unlike many similar period conversions, the majority of the total square footage is useable living space, as opposed to being distributed within larger hallways.

Council tax band D EPC rating B (83)

Features

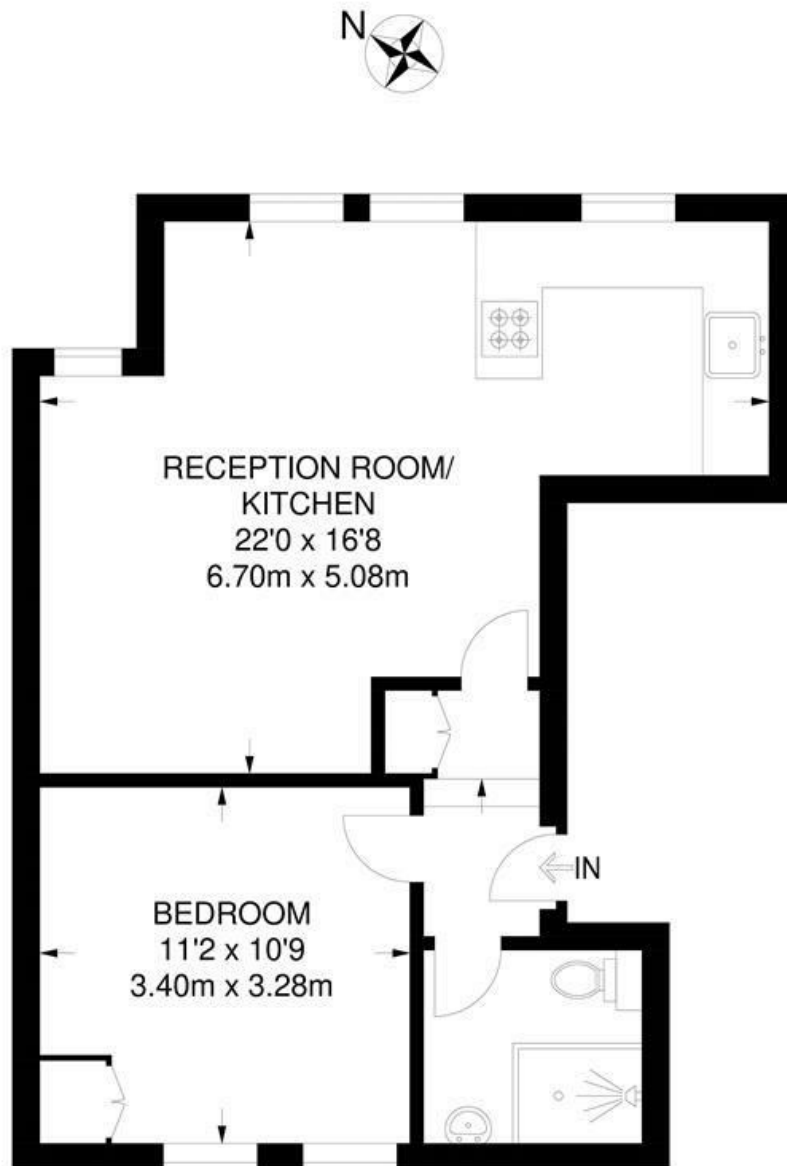
- One double bedroom
- Nearly 500 square feet of internal space
- Victorian conversion
- First floor
- Bright and airy
- Tasteful, neutral decor throughout
- Minutes from Clapham Junction
- Clapham Common is nestled at the end of the road
- Chain-free



Lavender Gardens, Clapham, SW11

Lavender Gardens, SW11
1 Bedroom Flat

APPROXIMATE TOTAL INTERNAL AREA: **473 SQ FT / 43.9 SQ M**



FIRST FLOOR



While we try our very best, floor plans are produced as a guide only and we take no responsibility for the precise accuracy with which any property is represented.

Lavender Gardens, Clapham, SW11

